



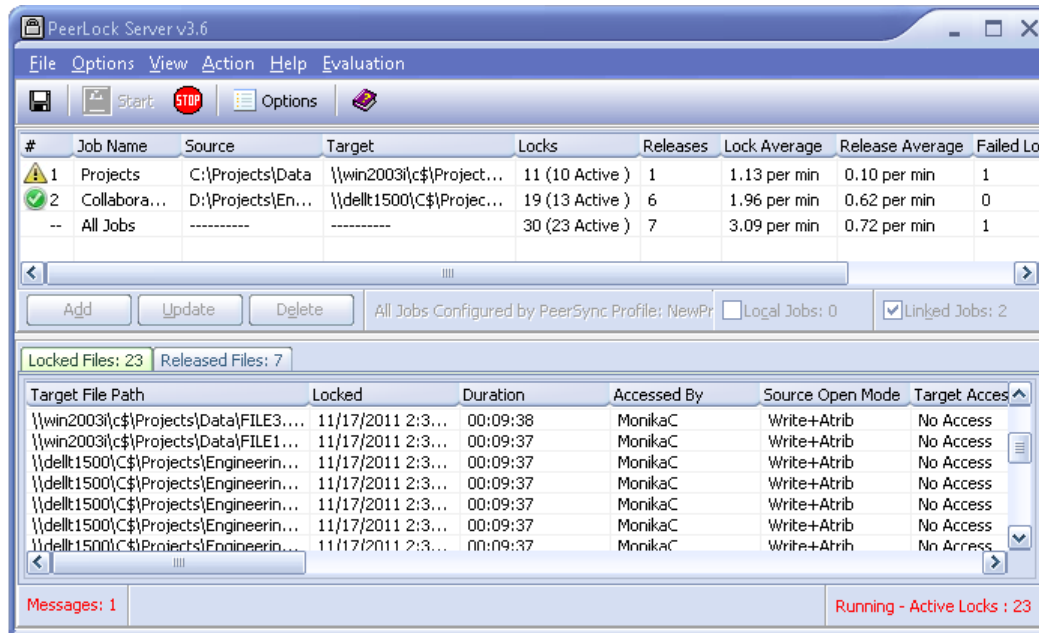
PeerLock Help Manual

Copyright © 1993-2011 Peer Software Inc. All Rights Reserved

Table of Contents

PeerLock Help	1
1 Getting Started	1
2 Main Menu	3
3 Toolbar	6
4 Selection List	6
Overview	6
Status Bar	7
Add Selection Screen	8
Update Selection Screen	10
Exceptions	12
Network Logon	13
Message Dialog	14
Selection List Popup Menu	15
5 Global Options	16
Lock Options	16
Release Options	18
Performance	19
Product Interaction	20
Includes/Excludes	21
Internal File Management	24
Reporting	25
6 Lock/Release List	26
Locked List	26
Released List	28
Lock/Release List Popup Menu	29
Lock/Release List Status Bar	30
7 Other Features	31
Shortcuts	31
Configuration File	32
8 Command Line Arguments	32
Command Line Arguments	32
9 Product Information	37
Product Editions/Licensing	37
License	38
Index	42

1 PeerLock Help



The manufacturer of PeerLock makes no warranties, implied or otherwise, for use of this product. User assumes all responsibility for any data loss or damage.

Copyright © 1993-2011 Peer Software Inc. All Rights Reserved [Privacy Policy](#)

PeerLock is a registered trademark of Peer Software, Inc.
 Embedded Open File Manager is a registered trademark of EVault.
 Reproduction in whole or in part without permission is strictly prohibited.

PeerLock Help Manual was built on Friday, November 18, 2011

1.1 Getting Started

Welcome to PeerLock. This product secures a user's files across a network of machines, ensuring that all copies of the files are locked while the user is working with the file. This security protects against multiple revisions occurring simultaneously on different machines.

How It Works

When a user opens a file in a watched folder, the corresponding target file is immediately locked on the other machines specified in the user selection list. Other users cannot make modifications to this file. When the user closes the file, the files residing on the other machines are immediately unlocked, and can now be used to make changes. PeerLock is designed to work with our PeerSync and Save-N-Sync products as to offer a total locking and synchronization solution.

Configuration

When using PeerLock specific environments will require certain options to be enabled/

disabled. Each environment is unique and may require modifying the default options through the interface or by using [Command Line Arguments](#). For more help on how to configure PeerLock for your environment please visit the support section on our website at <http://www.peersoftware.com/support.html>.

PeerLock Installations and Registration

PeerLock is shipped (downloaded) in a full installation program. To run, simply double click on the executable file from the explorer (or choose Start Menu Run option and the select the application).

Evaluation copies do not require user information and passwords. Registration copies require you to enter a Registration Key into the Register Software Screen. When purchased, Peer Software will send the Authorization Key required to unlock PeerLock's Evaluation. This key is to be entered during the installation of the software.

If this is an unregistered or evaluation copy of PeerLock, you can register it with Peer Software, Inc. as a fully licensed copy by providing credit card information via phone or secure Internet registration, or by sending a check or money order to the address below (see included "readme.txt" file for pricing information).

Register online via secure internet credit card registration at <http://www.peersoftware.com>

Register by phone via credit card by calling:
703-763-7700 between the hours of 9:00 AM and 5:00 PM EST

Register by mail, send check or money order to:
Peer Software, Inc.
5900 Fort Drive, Suite 415
Centreville, VA 20121

Upgrade Information

As new updates/changes become available, updated versions of the software will be posted on our web page <http://www.peersoftware.com>. Check this page periodically to download the latest executables. Your Authorization Key will continue to work with updated versions unless a major release is issued, or PeerLock is installed in a different folder than the previously installed/authorized version. Please refer to the WhatsNew and/or ReadMe files shipped with the PeerLock installation for the latest upgrade information.

Product Support

All support of PeerLock will be handled on our website (<http://www.peersoftware.com>) support page for this product.

Terms And Conditions

Read [License](#) agreement before using this program.

Suggestions, Comments, or Requests for Support:

Peer Software, Inc.
5900 Fort Drive, Suite 415

Centreville, VA 20121
 Phone: 703-763-7700
 FAX: 703-763-7705
 Email: support@peersoftware.com

The manufacturer of PeerLock makes no warranties, implied or otherwise, for use of this product. User assumes all responsibility for any data loss or damage.

Copyright © 1993-2011 Peer Software Inc. All Rights Reserved [Privacy Policy](#)

PeerLock is a registered trademark of Peer Software, Inc.
 Embedded Open File Manager is a registered trademark of St. Bernard Software.
 Reproduction in whole or in part without permission is strictly prohibited.

PeerLock Help Manual was built on Friday, November 18, 2011

1.2 Main Menu

File Options View Action Help Evaluation

File Menu	
Save Defaults	Once selected, this option stores out all the interface settings or changes to the Configuration file.
Shortcuts	This menu item allows you to create a shortcut either on the Desktop or Startup folder. The /AM command line argument will be appended to this shortcut so that PeerLock will automatically start when launched from the shortcut.
Service	Provides ability to Install and Uninstall the PeerLock service as well as ability to open the Services dialog. To start the PeerLock service, close the PeerLock application, open the Windows Services dialog, right-click on the PeerLock Utility Software item and select Start. Be sure PeerLock is configured to run under a Domain Administrator account that has full access to all the source and target resources.
Exit	This menu item will terminate PeerLock.

Options Menu	
Lock Options...	This menu item will open the Lock Options dialog.
Release Options...	This menu item will open the Release Options dialog.
Performance...	This menu item will open the Performance dialog.
Product Interaction...	This menu item will open the Product Interaction dialog.
Includes/Excludes...	This menu item will open the Includes/Excludes dialog.

Internal File Management	This menu item will open the Internal File Management dialog.
Reporting	This menu item will open the Reporting dialog.
All Global Option	Displays the Global Options dialog which shows all the above dialogs in a tabular format for easy access.

View Menu	
Tray Icon	Provides ability to hide/show the Tray Icon. By default the Tray Icon is displayed at runtime when PeerLock has been started and is in a running state.
Toolbar	Provides ability to hide/show the Toolbar . By default the Toolbar is displayed.
Selection List	Provides ability to hide/show the Selection List . By default the Selection List is displayed.
Status Bars	Provides ability to hide/show the Selection List Status Bar and the Lock/Release List Status Bar . By default these status bars are shown.
Folders	Provides ability to Create and View the source and target folders of the current selections. If the folders do not exist, PeerLock will create them. This option will tile the folders on the left side of the screen in an orderly fashion.
Log File	Provides a quick way to View and Clear the current log file.
Messages	Opens the Messages dialog to view any messages that have occurred during the current operation.
Use Skins	Provides option to enable/disable the use of skins. By default the use of Skins is enabled. We recommend disabling this option when running on machines that use 256 color resolution or lower.

Action Menu	
Selections	Provides ability to Add, Update, and Delete a Job/selection. These options are also available from the Selection List Status Bar and the Selection List Popup Menu .
Auto Start	When enabled PeerLock will be started and begin the locking process automatically when the user interface is started. By default Auto Start is disabled.
Start	When clicked PeerLock will begin the locking process. Close the PeerLock application in order to start the service .
Stop	When clicked PeerLock will end the locking process and

	release all the handles it currently has on the target files.
Release All Locks	<p>PeerLock will release the lock handles of all the files currently locked on the target folders. When using this option the target files will not enter the Idle period before being released. If using Local Detection, the target files will be permanently released. The source files would need to be closed and re-opened for the lock handles to be re-applied to the target files. When using Server Detection, the target files will be temporarily released. If at the next Lock Frequency interval PeerLock detects that the source files are opened, it will re-apply the lock handles to the target files. Once an item is released it will be added to the Release list.</p> <p>Note: Starting with version 3.0, PeerLock supports File Server Mode Detection only.</p>

Help Menu	
PeerLock Help	Opens this Help File.
Online Resources	Provides links to various online resources such as support documentation, guidelines for collaboration configuration, link to our online support forum, and other useful website links.
Create System Info File on Desktop	Allows you to create a system info file (SysInfo.nfo) that you can submit to our support team for troubleshooting purposes.
Register PeerLock	Opens the Registration window to view or modify the PeerLock activation key/license.
About PeerLock	Opens the About screen for a summary view of the current PeerLock version/build and provides access to the Registration dialog.

Evaluation Menu (Available only during evaluation/trial modes)	
Register PeerLock	Opens the Registration window to view or modify the PeerLock activation key/license.
About PeerLock	Opens the About screen for a summary view of the current PeerLock version/build and provides access to the Registration dialog.

Notes:

- Options and Action features can be set via [Command Line Arguments](#).
- For more information on Options and Action features see [Command Line Arguments](#).
- The Create/View and Close Folder Selections in MS Windows Explorer features are only available in the [Server Edition](#) of PeerLock.

4. Service features are only available in the [Server Edition](#) of PeerLock.
5. If you install PeerLock Server as a service, you must configure it to use an account that has access to all folder selections (i.e. a domain\ admin account).
6. If you install PeerLock Server as a service, you can still run it as an application but you should run only one instance (Application or Service) at a time.

1.3 Toolbar



Toolbar Items	
The Toolbar section allows you to quickly access most of the commonly used menu items. This section can be viewed/hidden by selecting/unselecting it under the View Main Menu item.	
Save Settings	Allows you to save the current application settings as the default settings.
Start	Allows you to start the current selections.
Stop	Allows you to stop the current selections.
Options	Provides quick access to the Global Options dialog.
Help	Allows you to access this help file.

1.4 Selection List

1.4.1 Overview

Source	Target	Job Name	Sub-folders	Include Files	Exclude Files	Exclude Folders
C:\Projects\Data	\\win2003\c\$\Projects\Data	Projects	On	*	~*.tmp;.TMP;....	\PSLOCK\
D:\Projects\Engineering	\\delt1500\C\$\Projects\E...	Collaboration	On	*	~*.tmp;.TMP;....	\PSLOCK\
<Double-Click Here to Add a Selection>						

Job Configured by PeerSync Profile: HQ Configuration.snc
 Local Jobs: 0
 Linked Jobs: 2

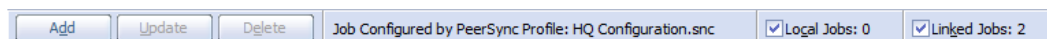
Selection List Columns	
The columns displayed on this panel can be shown/hidden by choosing Column Selections... from the Selection List Popup Menu . You may also reposition the columns simply by dragging them to a desired position. The Selection List can be shown/hidden via the View menu. The default columns are Source, Target, and Sub-folders.	
Source	Displays the folder that you wish to monitor for files that are opened.
Target	Shows the folder or a list of folders where the files that you wish to be locked upon a source file open reside.

Sub-folders	Displays the option to watch just the root of the folder (Off) or to include sub-folders of your Source and Target selection (On).
Include	Shows the masking of the types of files you wish to include. File types are specified by a star command followed by the file extension (i.e. *.doc;*.txt, etc.). The default setting (*) includes all files. Multiple Inclusions will be semi-colon delimited. Inclusions are not case sensitive, i.e. A = a.
Exclude	Shows the masking of the types of files you wish to exclude. File types are specified by a star command followed by the file extension (i.e. *.doc;*.txt, etc.). Multiple Exclusions will be semi-colon delimited. Exclusions are not case sensitive, i.e. A = a.
Source Connect As	Displays the username (if any) specified to allow PeerLock connection to the source directory that is not accessible using the current logged on account.
Target Connect As	Displays the username (if any) specified to allow PeerLock connection to the target directory that is not accessible using the current logged on account.

Notes:

1. Please refer to [Product Editions](#) for Selection Limits.
2. PeerLock allows for 255 Source Selections with each allowing for up to 100 Targets.
3. Folders can be dragged and dropped from MS Windows Explorer into these fields.
4. The drop-down lists will be dynamically populated with source-target folders, as they are set.
5. You can delete items from drop-down lists by dropping the list and selecting the item and pressing the delete key.
6. UNC names can be entered manually, or can be selected from the Network Neighborhood.
7. UNC names will appear in the form: \\COMPUTER\SHAREDDEVICE\PATH

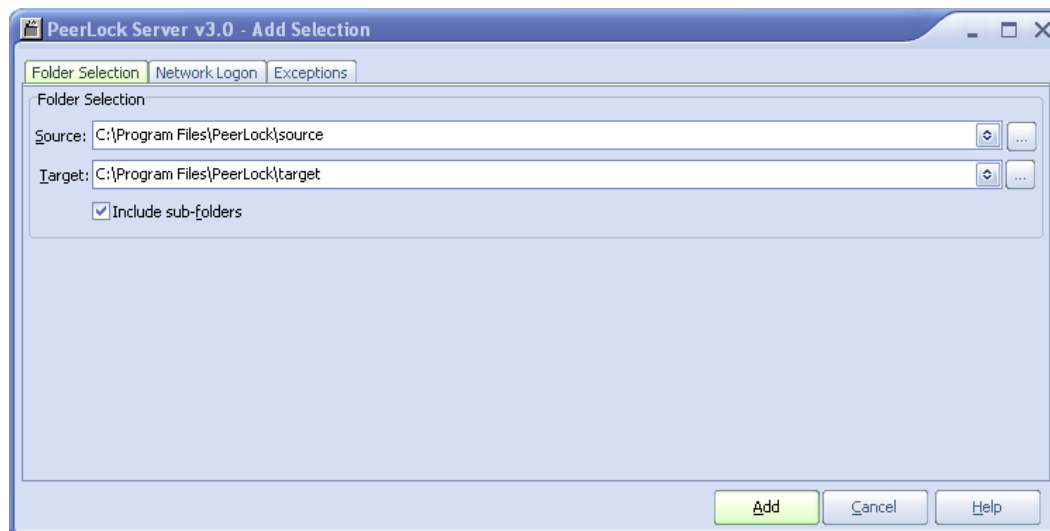
1.4.2 Status Bar



Selection List Status Bar Items	
Provides the ability to Add, Update, and Delete source and target folder entries.	
Add	This button will display the Add Selection Screen where you can select a source and target folder list, and the ability to include sub-folders.
Update	Displays the Update Selection Screen where you can edit the source and target folder list, and the ability to include sub-folders. This button is enabled when a Selection List item is selected.

Delete	Delete the selected item from the Selection List . This button is enabled when a Selection List item is selected.
Selection Count Status	Display of the current selection count.

1.4.3 Add Selection Screen



Folder Selection

This screen is used to add a new selection. By default this selection contains a source and target sub-folder of the installed folder with Include sub-folders enabled and a mask that includes all files. You can access this screen via the [Action](#) --> [Selections](#) --> [Add](#) menu item, by double clicking the <Double-Click Here to Add Selection> item in the [Selection List](#), by right-clicking on the [Selection List](#) and selecting Add from the popup menu, or by clicking on the Add button located on the [Selection List Status Bar](#).

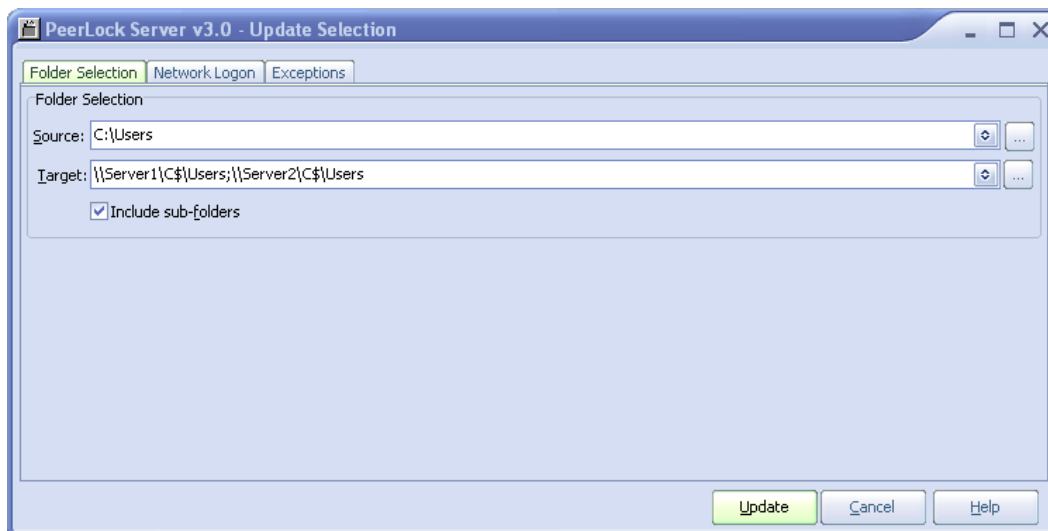
Source	<p>You may select a Source folder by typing the file path into the field provided, dragging and dropping from MS Windows Explorer into the field provided, or by using the Select Source Button to the right of this field. All source folder selections must reside on the local machine.</p> <p>Click on the brows button to the right of this field to navigate to the desired Source directory: once this box has opened, locate your chosen Source folder, select it using the left mouse button, and click "OK", or by double-clicking the Source field. This selection requires that the machine on which PeerLock is running has full access to the desired source directory.</p>
Target	<p>You may select a Target folder by typing the file path into the field provided, dragging and dropping from MS Windows Explorer into the field provided, or by using the Select Target Button to the right of this field. For multiple target selections use</p>

	<p>a semi-colon delimiter as depicted above.</p> <p>For remote Target locations we recommend providing the UNC paths to the desired locations.</p> <p>Click on the brows button to the right of this field to navigate to the desired Target directory: This button will display a 'Target Folder Selection' dialog that will allow you to add targets. To add a Target folder, click New, then type the desired Target folder into the field located at the bottom of the dialog, or you may use the browse for folder button. This button opens a "Browse for Folder" dialog box: once this box has opened, locate your chosen Target folder, select it using the left mouse button, and click "OK." Repeat this process for each desired target folder. Target folders can be deleted by selecting them from the list and clicking the Delete key at the bottom of the dialog box. Once you have finished, click the OK button. The dialog will close and all of the Target folders you have specified will automatically appear in the Target field in the proper format (separated by semi-colons).</p> <p>This selection requires that the machine on which PeerSync is running has full access to the desired Target directory. In some instances Network Logon may be required.</p>
Include sub-folders	Option to enable/disable the including of sub-folders of for the current selection.

Notes:

1. Please refer to [Product Editions](#) for Selection Limits.
2. PeerLock allows for 255 Source Selections with each allowing for up to 100 Targets.
3. Folders can be dragged and dropped from MS Windows Explorer into these fields.
4. The drop-down lists will be dynamically populated with source-target folders, as they are set.
5. You can delete items from drop-down lists by dropping the list and selecting the item and pressing the delete key.
6. UNC names can be entered manually, or can be selected from the Network Neighborhood.
7. UNC names will appear in the form: \\COMPUTER\SHAREDDEVICE\PATH

1.4.4 Update Selection Screen



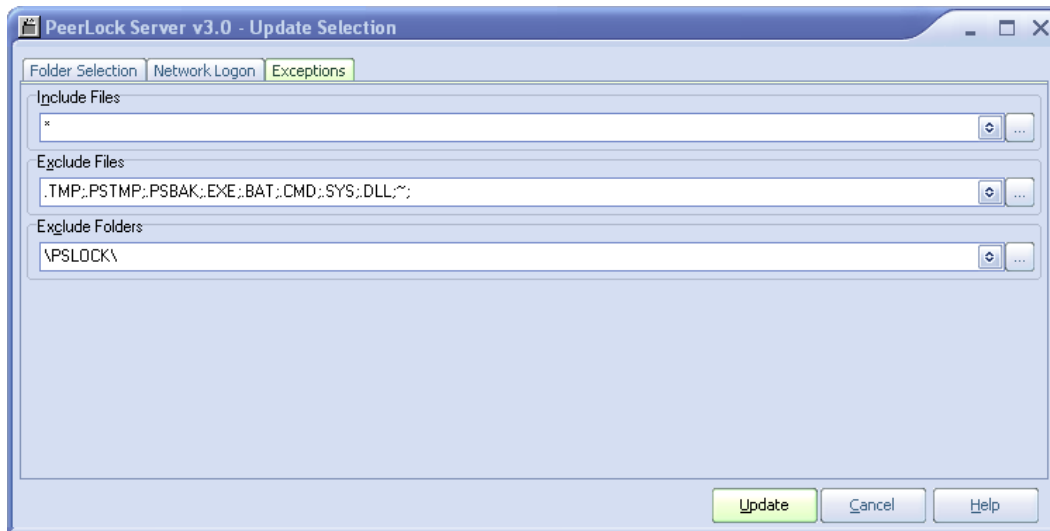
Folder Selection	
<p>This screen is used to update an existing selection. You can access this screen via the Action --> Selections --> Update menu item, by double clicking an existing item, by right-clicking on the Selection List and selecting Update from the popup menu, or by clicking on the Update button located on the Selection List Status Bar.</p>	
Source	<p>You may select a Source folder by typing the file path into the field provided, dragging and dropping from MS Windows Explorer into the field provided, or by using the Select Source Button to the right of this field. All source folder selections must reside on the local machine.</p> <p>Click on the brows button to the right of this field to navigate to the desired Source directory: once this box has opened, locate your chosen Source folder, select it using the left mouse button, and click "OK", or by double-clicking the Source field. This selection requires that the machine on which PeerLock is running has full access to the desired source directory.</p>
Target	<p>You may select a Target folder by typing the file path into the field provided, dragging and dropping from MS Windows Explorer into the field provided, or by using the Select Target Button to the right of this field. For multiple target selections use a semi-colon delimiter as depicted above.</p> <p>For remote Target locations we recommend providing the UNC paths to the desired locations.</p> <p>Click on the brows button to the right of this field to navigate to the desired Target directory: This button will display a 'Target Folder Selection' dialog that will allow you to add targets. To</p>

	<p>add a Target folder, click New, then type the desired Target folder into the field located at the bottom of the dialog, or you may use the browse for folder button. This button opens a "Browse for Folder" dialog box: once this box has opened, locate your chosen Target folder, select it using the left mouse button, and click "OK." Repeat this process for each desired target folder. Target folders can be deleted by selecting them from the list and clicking the Delete key at the bottom of the dialog box. Once you have finished, click the OK button. The dialog will close and all of the Target folders you have specified will automatically appear in the Target field in the proper format (separated by semi-colons).</p> <p>This selection requires that the machine on which PeerSync is running has full access to the desired Target directory. In some instances Network Logon may be required.</p>
Include sub-folders	Option to enable/disable the including of sub-folders of for the current selection.

Notes:

1. Please refer to [Product Editions](#) for Selection Limits.
2. PeerLock allows for 255 Source Selections with each allowing for up to 100 Targets.
3. Folders can be dragged and dropped from MS Windows Explorer into these fields.
4. The drop-down lists will be dynamically populated with source-target folders, as they are set.
5. You can delete items from drop-down lists by dropping the list and selecting the item and pressing the delete key.
6. UNC names can be entered manually, or can be selected from the Network Neighborhood.
7. UNC names will appear in the form: \\COMPUTER\SHAREDDEVICE\PATH

1.4.5 Exceptions

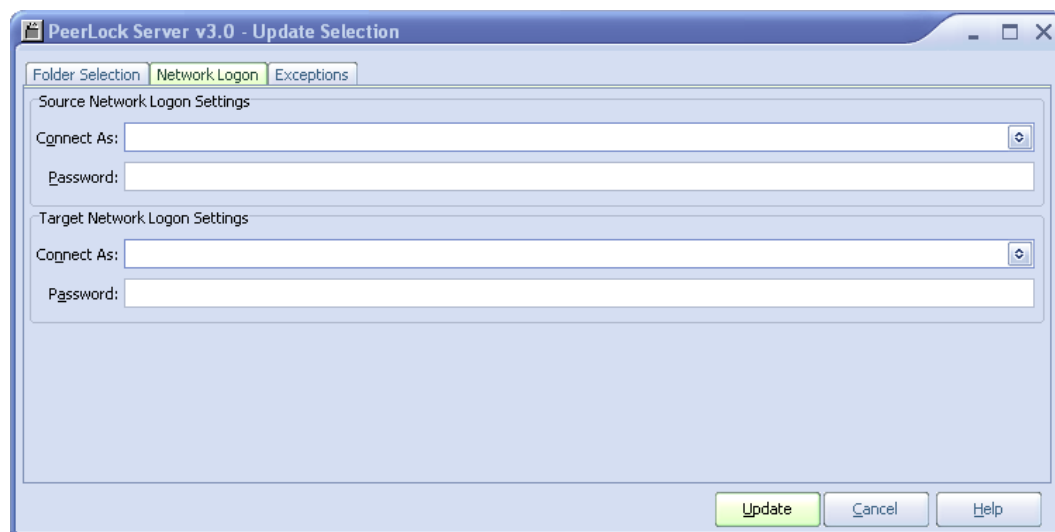


Exceptions	
Provides ability to select files/folders to be included/excluded at the Job/Selection level.	
Include Files	<p>Select an inclusion by typing file types into the field provided, dragging and dropping files from MS Windows Explorer into the field provided, or by using the button to the right of this field. For multiple selections use a semi-colon delimiter.</p> <p>The button to the right of this field will display a selection dialog that will allow you to add inclusions. To add an inclusion, click New then type the desired string (i.e. *.doc) into the field located at the bottom of the dialog. Repeat this process for each desired strings. Strings can be deleted by selecting them from the list and clicking the Delete button at the bottom of the dialog box. Once you have finished, click the OK button. The dialog will close and all of the strings you have specified will automatically appear in the Include Files field in the proper format (semi-colon delimited).</p>
Exclude Files	<p>Enter an exclusion by typing file types into the field provided, dragging and dropping files from MS Windows Explorer into the field provided, or by using the button to the right of this field. For multiple selections use a semi-colon delimiter.</p> <p>The button to the right of this field will display a dialog that will allow you to add file exclusions. To add an exclusion click New then type the desired string (i.e. *.doc) into the field located at the bottom of the dialog. Repeat this process for each desired exclusion. Strings can be deleted by selecting them from the list and clicking the Delete button at the bottom of the dialog box. Once you have finished, click the OK button.</p>

	The dialog will close and all of the strings you have specified will automatically appear in the Exclude Files field in the proper format (semi-colon delimited).
Exclude Folders	<p>Enter a folder exclusion by typing the folder names or paths into the field provided, dragging and dropping the folders from MS Windows Explorer into the field provided, or by using the button to the right of this field. For multiple selections use a semi-colon delimiter.</p> <p>The button to the right of this field will display a dialog that will allow you to add folders. To add an exclusion click New then type the desired string (i.e. System32) into the field located at the bottom of the dialog. Repeat this process for each desired exclusion. Folders can be deleted by selecting them from the list and clicking the Delete button at the bottom of the dialog box. Once you have finished, click the OK button. The dialog will close and all of the folders you have specified will automatically appear in the Exclude Folders field in the proper format (semi-colon delimited).</p>

Hint: Dragging and dropping files and folders onto the desired include/exclude fields is the fastest way to specify exceptions. Dragging and dropping the files/folders on these fields will cause PeerLock to dynamically enter only the file extensions or folder names in the specified field. Dragging and dropping the files/folder on top of the button to the right of these fields will cause PeerLock to enter the full name of the files or the full path of the folders.

1.4.6 Network Logon



Source Network Logon Settings	
Provides the ability to connect to a source folder that may require a different account than the one PeerLock is running under.	
Connect As	Provide the user name to allow PeerLock connection to the

	source directory that is not accessible using the current logged on account. Be sure to include the domain name if applicable (i.e. MyDomain\UserName).
Password	Enter the password information for login.

Target Network Logon Settings	
Provides the ability to connect to a target folder that may require a different account than the one PeerLock is running under.	
Connect As	Provide the user name to allow PeerLock connection to the target directory that is not accessible using the current logged on account. Be sure to include the domain name if applicable (i.e. MyDomain\UserName).
Password	Enter the password information for login.

1.4.7 Message Dialog



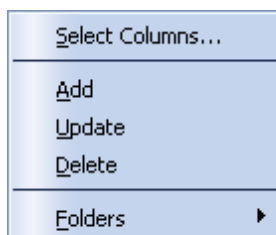
Message Dialog	
The message dialog displays any messages that have occurred during the current operation. You can specify the Max Count by selecting this value for the amount of messages to retain. You may also view the date and details for each message by clicking on that message.	
Message Count	This is the number of "unique" messages being displayed. If a message is reported more than once, the number of instances will be specified at the end of the 'Date' field.
Max Count	This is the maximum number of messages that the dialog will retain.

File Menu

Close Message Dialog	Selecting this option will close the Messages dialog. To reopen the Messages dialog, click on the Messages label located on the Lock/Release List Status Bar .
Terminate Application	This menu item will terminate PeerLock.

Options Menu	
Auto Display	Allows you to turn On/Off the Auto Display option. If Auto Display is enabled, the Messages dialog will be shown automatically when an error occurs,.
Show Icon on Tray	Provides ability to hide/show the Tray Icon. By default the Tray Icon is displayed at runtime when PeerLock has been started and is in a running state.
Clear Message List	Selecting this option will remove all messages shown in the Messages list.
Log File	Provides a quick way to View and Clear the current log file.
Show Application	When running PeerLock in a minimized state, not visible, the Messages dialog should show up automatically by default and messages are received, selecting this option from the Messages dialog will open the PeerLock application.

1.4.8 Selection List Popup Menu

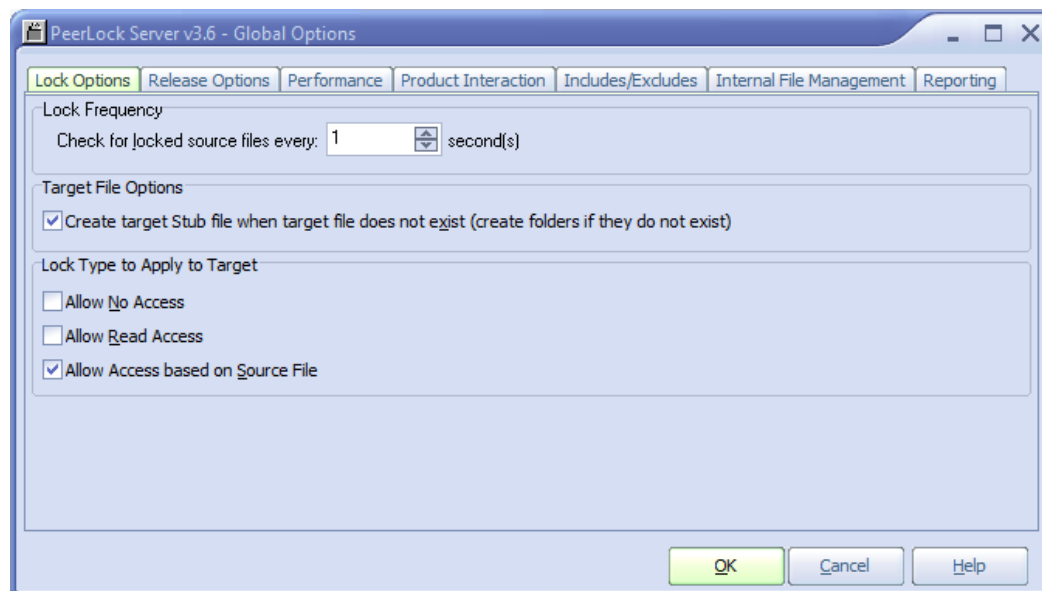


Selection List Popup Menu	
Display the Selection List Popup Menu by right-clicking on the Selection_List , This menu can only be accessed while PeerLock is not in a running state.	
Select Columns...	Displays a dialog from which you can choose to show/hide specific Selection_List columns. The Source and Target columns will be displayed at all times and cannot be hidden. You can hide/show the entire Selection_List by disabling / enabling the Selection List item within the View menu.
Add	Use this option to add a new selection. The Add_Selection_Screen will be shown to guide you through the source/target folder selection process.

Update	Use this option to update an existing selection. The Update Selection_Screen will be shown to guide you through the source/target update process.
Delete	Provides ability to delete the current selection.
Folders	Provides ability to open and display the source and target folders of the current selection. If the folders do not exist PeerLock will create them. It also gives you the ability to close all opened source and target folders of the current selection.

1.5 Global Options

1.5.1 Lock Options



Lock Frequency	
Check for locked source files every x second(s)	Represents the interval, in seconds, of how often PeerLock will check for locked source files. Once PeerLock detects that a source file is locked it will lock the corresponding target files. Default value is every 1 second.

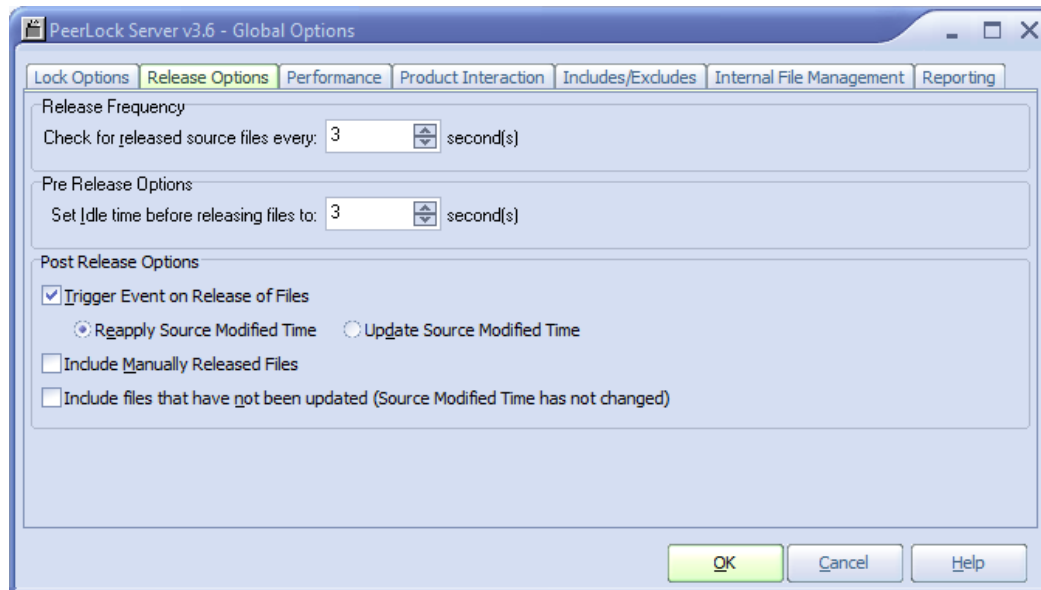
Target File Options	
Create target Stub file when target file does not exist (create folder if they do not exist)	If the opened source file does not have a corresponding target file, by default, this option will cause PeerLock to create a 0 size stub file on the remote target location(s). PeerLock will create the folder on the target if it does not exist. The stub file will be removed/cleared upon release of the source file. When using PeerSync with this option enabled, the stub file will be

	<p>excluded by PeerSync. This feature will prevent files from being added to the target while its corresponding source file is open.</p> <p>Turning off this option will cause PeerLock to add the file to the Locked Files list, create PSTMP files on both the source and target locations, but will not create a 0 size stub file as well as folders.</p>
--	--

Lock Type to Apply to Target	
Allow No Access	PeerLock will use an exclusive handle to lock the corresponding target files. This method will completely lock out users from accessing the target files.
Allow Read Access	PeerLock will allow Read access for all locked target files. This method will allow user to open files in a Read Only mode.
Allow Access based on Source File (Default)	<p>PeerLock will take into account the source file access and replicate the same exact handles to the target files. PeerLock will apply the same type of handle to the target file that is currently applied to the source file. This method will lock out users from the target file in the same fashion they are locked out from the source. This option is beneficial when working with applications that allow for various types of file access (i.e. some files are opened for read and write access while other related files will be opened for read only access).</p> <p>When using this feature, if the type of source lock is modified by the application maintaining the lock, PeerLock will reassign the new type of lock to the target file without releasing the file from the Locked list. Also, if there are multiple locks on the file PeerLock will merge or combine the lock type permissions together to use one complete lock to apply to the corresponding target file(s).</p> <p>This option is enabled by default.</p>

Note: Global Options settings apply to all Jobs/ Selections.

1.5.2 Release Options



Release Frequency	
Check for released source files every x second(s)	Represents the interval of how often PeerLock will check that the locked source files are still in a locked state. Once PeerLock detects that a locked source files has been released PeerLock will release the corresponding target file or enter the Idle state. Once an item is released it will be added to the Release list. The default value is every 3 seconds.

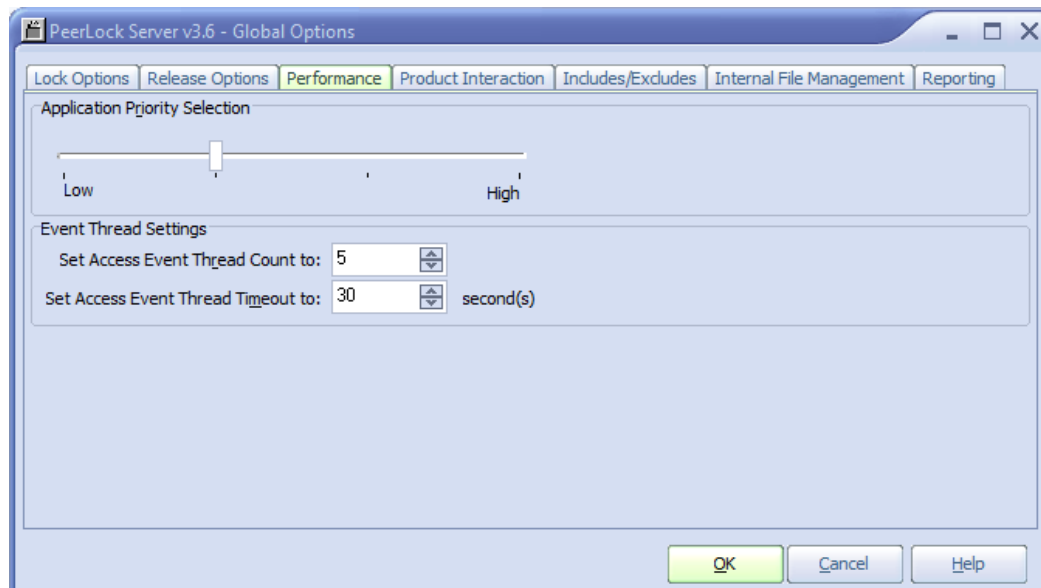
Pre Release Options	
Set Idle time before releasing files to x second(s)	Represents the interval of how long the target file will remain locked once the source file has been released. When the source file is closed PeerLock will wait x seconds before releasing the target file. During this period the file entry in the Locked list will be highlighted Yellow. This feature is intended to protect the releasing of files during file opens and saves. Certain applications may temporary release files during these procedures. With this feature enabled PeerLock will wait the set period of time to make sure the file is fully released before unlocking the corresponding target files. Once an item is released it will be added to the Release list. The default value is every 5 seconds.

Post Release Options

Trigger Event on Release of Files	If the source file was been modified/updated while it was opened, PeerLock will re-apply the original modified date/time stamp to the source file once it is closed/released. This method will trigger an update event to be detected by PeerSync.
Reapply Source Modified Time	If the source file was been modified/updated while it was opened, PeerLock will apply the current date/time stamp to the source file once it is closed/released. This method will trigger an update event to be detected by PeerSync.
Update Source Modified Time	If a file was manually forced to be released, this method will run through the process of triggering an event on the source file (based on which of the trigger events are selected). By default this option is disabled because we don't want to cause a trigger event if the source file may still be opened.
Include Manually Released Files	This option will allow for triggering of files that have been manually released. By default this setting is disabled.
Include files that have not been updated (Source Modified Time has not changed)	This option will allow for triggering of files that may have been open but not updated. By default this setting is disabled.

Note: Global Options settings apply to all Jobs/ Selections.

1.5.3 Performance



Application Priority Selection

Move the slider to adjust the PeerLock application priority. To achieve faster PeerLock response rate move the slider to the right. To achieve lower CPU usage move the slider to the left. Each slider position represents the following values:

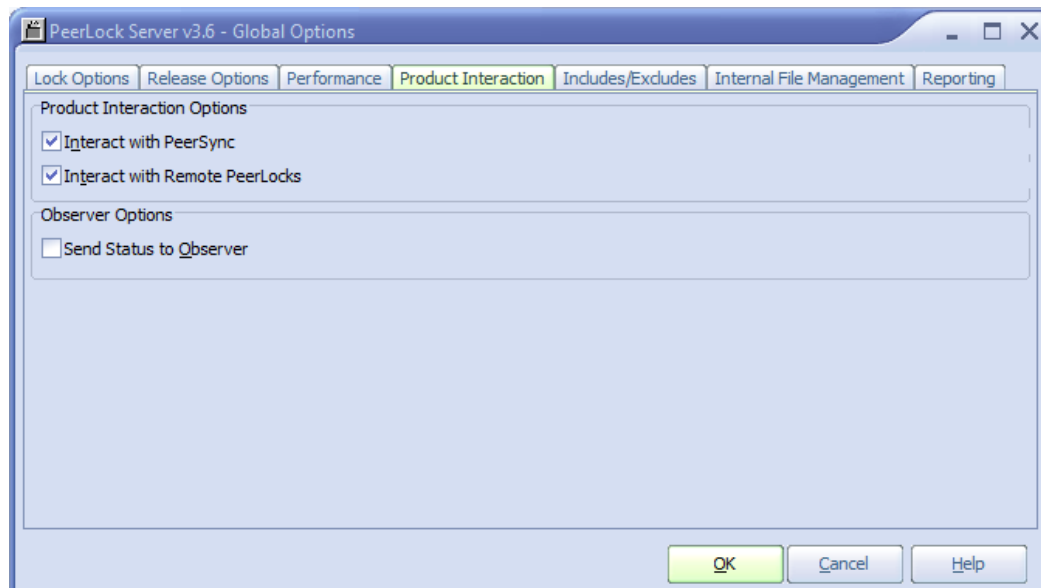
	Sleep Frequency	Sleep Value
Slider Position 1	10	100
Slider Position 2	25	50
Slider Position 3	50	25
Slider Position 4	100	10

Event Thread Settings

Set Access Event Thread Count to	Specify the number of threads used to detect and lock opened files. This feature improves the detection and locking of opened files and overall responsiveness of PeerLock. Increase this value if you want PeerLock to have more threads available for locking files. Default value is 5.
Set Access Event Thread Timeout to	The Timeout setting is used to determine for how long to leave inactive threads running for. Default value is 30 seconds.

Note: Global Options settings apply to all Jobs/ Selections.

1.5.4 Product Interaction



Product Interaction Options

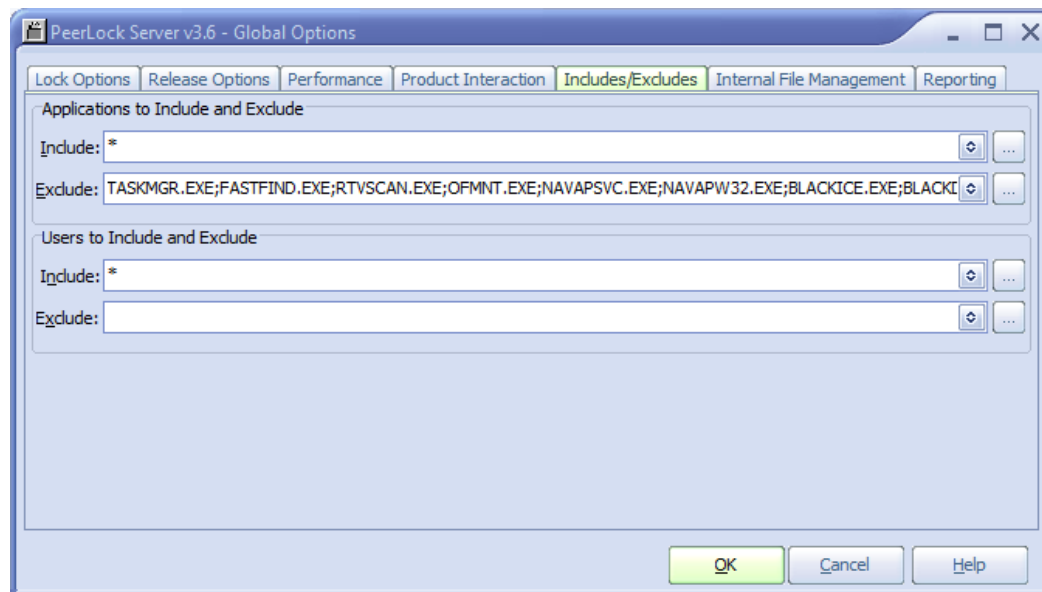
Interact with PeerSync and/or Save-N-Sync	If this option is checked PeerLock will interact with other PeerSyncs by excluding their corresponding temporary files from being locked (i.e. *.pstmp, *.brtmp).
Interact with Remote PeerLocks	If this option is checked PeerLock will interact with other PeerLocks by excluding their corresponding temporary files from being locked (i.e. *.pslock).

Observer Options	
Send Status to Observer	Check this option in order for PeerLock to begin sending status information to the PSObserver. By default this option is disabled.

Notes:

1. If one of the above options are checked PeerLock will create a hidden temporary system file in the target directory (*.pslock).
2. Global Option settings apply to all Jobs/ Selections.

1.5.5 Includes/Excludes



Applications to Include and Exclude	
The Include/Exclude window is accessible from the Options Menu . This dialog allows you to select applications or users to include and/or exclude from the event detection used to determine open source files.	
Include	Use this field to determine which applications to include in the

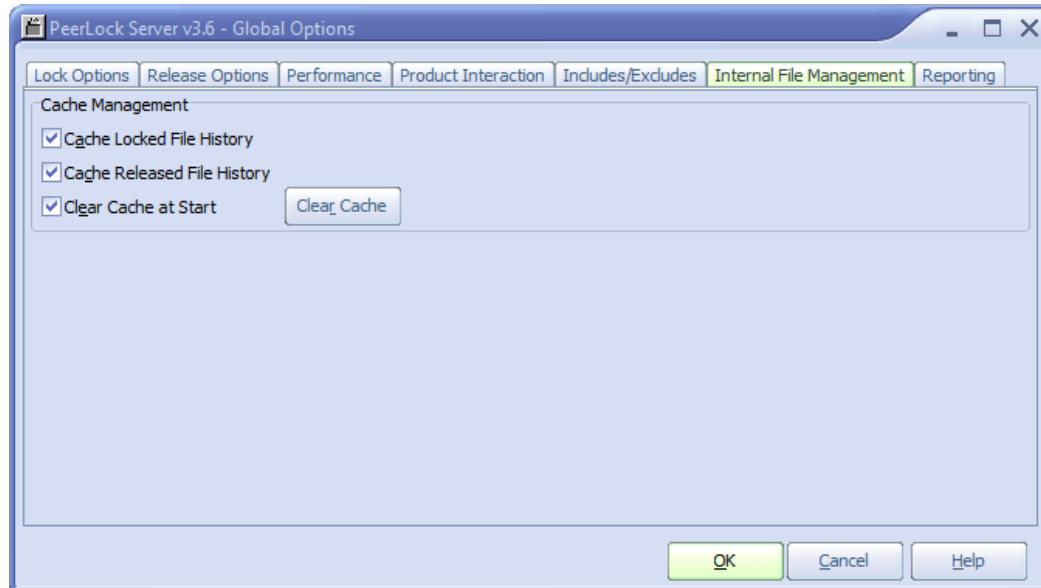
	<p>event detection used to determine open source files. The default setting (*) includes all applications. Multiple Includes can be used and are semicolon delimited (i.e. WINWORD.EXE;EXCEL.EXE). Includes are not case sensitive, i.e. "A" = "a". Includes can be typed manually, or can be specified using either the drop-down list located or the Include Applications Button to the right of the field.</p>
Include Applications Button	<p>Opens an "Include Applications" dialog box into which application names may be entered. To add an application to include, click "New", then type the desired application name into the field located at the bottom of the dialog. Repeat this process for each desired application to include. Includes can be deleted by selecting them from the list and clicking the "Delete" key at the bottom of the dialog box. Once you have finished, click the "OK" Button. The dialog will close and all of the Includes you have specified will automatically appear in the Include Applications field in the proper format (separated by semicolons).</p>
Exclude	<p>Use this field to determine which applications to exclude in the event detection used to determine open source files. The default setting includes a list of applications that may trigger unwanted detection. Multiple Excludes can be used and are semicolon delimited (i.e. EXPLORER.EXE;PeerLock.EXE). Excludes are not case sensitive, i.e. "A" = "a". Excludes can be typed manually, or can be specified using either the drop-down list located or the Exclude Applications Button to the right of the field.</p>
Exclude Application Button	<p>Opens an "Excludes Applications" dialog box into which application names may be entered. To add an application to exclude, click "New", then type the desired application name into the field located at the bottom of the dialog. Repeat this process for each desired application to exclude. Excludes can be deleted by selecting them from the list and clicking the "Delete" key at the bottom of the dialog box. Once you have finished, click the "OK" Button. The dialog will close and all of the Excludes you have specified will automatically appear in the Exclude Applications field in the proper format (separated by semicolons).</p>

<p>Users to Include and Exclude</p> <p>The Users to Include/Exclude window is accessible from the Options Menu. This dialog allows you to specify the users to include and/or exclude from the event detection used to determine open source files.</p>	
Include	<p>Enter the names of the users for which you want PeerLock to detect opened files. The default setting (*) includes all users. Multiple Includes can be used and are semicolon delimited (i.e. JOES;MARYK). Includes are not case sensitive, i.e. "A" =</p>

	"a". Includes can be typed manually, or can be specified using either the drop-down list located or the Include Users Button to the right of the field.
Include Users Button	Opens an "Include Users" dialog box into which user names may be entered. To add a user to include, click "New", then type the desired name into the field located at the bottom of the dialog. Repeat this process for each user to include. Includes can be deleted by selecting them from the list and clicking the "Delete" key at the bottom of the dialog box. Once you have finished, click the "OK" Button. The dialog will close and all of the Includes you have specified will automatically appear in the Include Users field in the proper format (separated by semicolons).
Exclude	<p>Enter the names of the users for which you want PeerLock to exclude opened files. The default setting is blank and will not exclude any users. Multiple Excludes can be used and are semicolon delimited (i.e. JOES;MARYK). Excludes are not case sensitive, i.e. "A" = "a". Excludes can be typed manually, or can be specified using either the drop-down list located or the Exclude Users Button to the right of the field.</p> <p>Example: You may choose to exclude files that are opened by the Administrator since activity generated under this account is typically non user related and does not need to be reacted on. Doing so will increase performance in PeerLock by filtering out unnecessary activity. For optimal performance we recommend you exclude the user account under which PeerLock and/or PeerSync are running.</p>
Exclude Users Button	Opens an "Exclude Users" dialog box into which user names may be entered. To add a user to exclude, click "New", then type the desired name into the field located at the bottom of the dialog. Repeat this process for each user to exclude. Exclude can be deleted by selecting them from the list and clicking the "Delete" key at the bottom of the dialog box. Once you have finished, click the "OK" Button. The dialog will close and all of the Excludes you have specified will automatically appear in the Exclude Users field in the proper format (separated by semicolons).

Note: Global Option settings apply to all Jobs/ Selections.

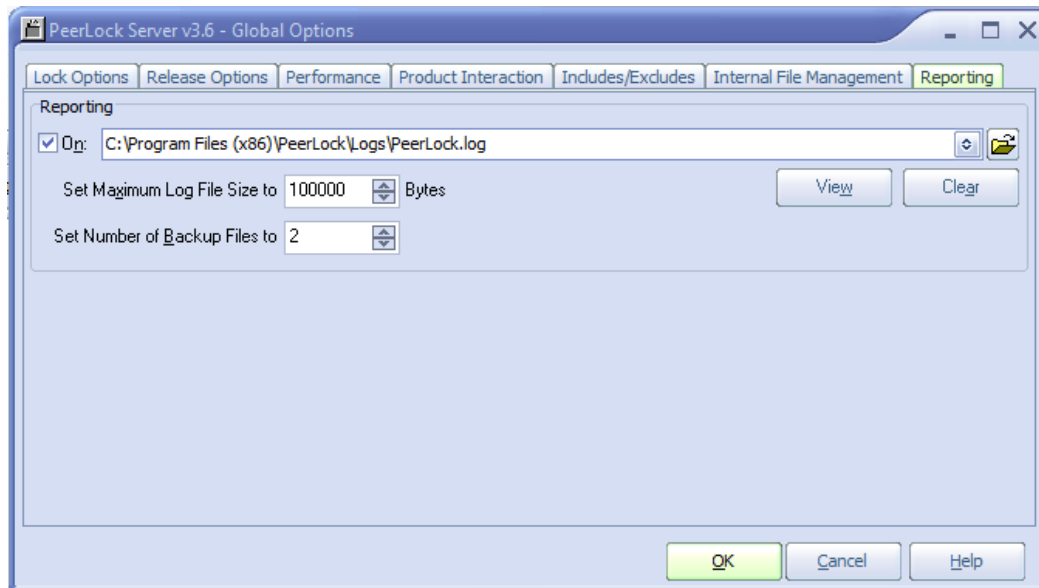
1.5.6 Internal File Management



Cache Management	
Provides ability to track and remove temporary files used by PeerLock.	
Cache Locked File History	Maintains a list of all the files locked by PeerLock in the PeerLock installation folder (...PeerLock\Cache\LFCache.txt). If the Clear Cache at start option is enabled, at the start-up of PeerLock, it will refer to this list to clean up the stub files and lock files left behind on the target folder. Alternatively this can be done manually by hitting the clear cache button. This setting is enabled by default.
Cache Released File History	Maintains a list of all the files released by PeerLock in the PeerLock installation folder (...PeerLock\Cache\LFCache.txt). If the Clear Cache at start option is enabled, at the start-up of PeerLock, it will refer to this list to clean up the stub files and lock files left behind on the target folder. Alternatively this can be done manually by hitting the clear cache button. This setting is enabled by default.
Clear Cache at Start	Clears out the cache file located in the Cache folder in the PeerLock installation folder when PeerLock is starting and begins to lock files down. This setting is enabled by default.

Note: Global Option settings apply to all Jobs/ Selections.

1.5.7 Reporting



Reporting	
<p>All known information at the time of an event is logged in a tab delimited format with column headers for the start and stop of a PeerLock locking session. This allows for easy import into a spread sheet.</p>	
On	<p>Selecting and turning this option On/Off will enable/disable log file reporting. Once checked, select a log file by typing the file path into the field provided, or by using the search button to the right. By default, the log file field will use the path in which the application has been installed: in most cases this will be 'C:\Program Files\PeerLock' and will assume a default log file name such as PeerLock.log.</p>
Set Maximum Log File Size to x Bytes	<p>Allows you to specify the maximum size of the log files to be created.</p>
Set Number of Backup Files to x	<p>Allows you to specify the amount of backup log files to be created. If you set the number of backup log files to 0 then at the time your log file reaches its maximum size it will be deleted and recreated on the next log entry. If you set the number of backup log files to a value of 1..n then when your log file reaches its maximum size it will be renamed to a file with the extension .bak plus the number the backup file is. Example: Setting the number of backup log files to 2 will produce the following log files:</p> <pre> LogFileName.log (newest information) LogFileName.bak1 LogFileName.bak2 (oldest information) </pre>

View	When this is selected the log file will be displayed in the default text editor.
Clear	When this is selected the log file will be cleared. The entire contents of the log file will be deleted leaving behind only an empty file.

Notes:

1. The drop-down lists will be dynamically populated with log file names, as they are set.
2. Files can be dragged and dropped from MS Windows Explorer into the 'Reporting' field.
3. Global Option settings apply to all Jobs/ Selections.

1.6 Lock/Release List

1.6.1 Locked List

Target File Path	Locked	Duration	Accessed By	Source Open Mode	Target Access Allowed
\\win2003\c\$\Projects\Data\FILE2...	11/17/2011 3:4...	00:02:15	MonikaC	Write+Atrib	No Access
\\win2003\c\$\Projects\Data\FILE8...	11/17/2011 3:4...	00:02:15	MonikaC	Write+Atrib	No Access
\\win2003\c\$\Projects\Data\FILE7...	11/17/2011 3:4...	00:02:14	MonikaC	Write+Atrib	No Access
\\win2003\c\$\Projects\Data\FILE4...	11/17/2011 3:4...	00:02:14	MonikaC	Write+Atrib	No Access
\\win2003\c\$\Projects\Data\FILE2...	11/17/2011 3:4...	00:02:13	MonikaC	Write+Atrib	No Access
\\win2003\c\$\Projects\Data\FILE3...	11/17/2011 3:4...	00:02:12	MonikaC	Write+Atrib	No Access
\\win2003\c\$\Projects\Data\FILE1...	11/17/2011 3:4...	00:02:11	MonikaC	Write+Atrib	No Access
\\win2003\c\$\Projects\Data\FILE1...	11/17/2011 3:4...	00:02:10	MonikaC	Write+Atrib	No Access

Locked List Columns

This panel contains all information captured about the source and target files that have been locked. The columns displayed on this panel can be shown/hidden by choosing Column Selections... from the [Lock List Popup Menu](#). You may also reposition the columns simply by dragging them to a desired position. The default columns are Target File Path, Locked, Duration, Accessed By, Target Access Mode, and Source File Path.

#Locks	Displays the number of locks on the source.
Accessed By	The name of the user who has opened the file or accessed the resource.
Application	Displays the application that has been detected as opening the source file.
Detection Type	This column represents the PeerLock detection mode used to detect what source files are locked/opened. This will either be File Server Mode Detection or Local Detection. Note: Starting with version 3.0, PeerLock supports File Server Mode Detection only.
Duration	Displays the amount of time that the source file has been opened.
Idle Time	Shows the amount of time the target file will remain locked once

	<p>the source file has been released. When the source file is closed PeerLock will wait the number of Idle Time seconds specified before releasing the target file. During the Idle Time period the file entry in the Locked list will be highlighted Yellow. The Idle Time value can be set in the Release Options dialog. This feature is intended to protect the releasing of files during file opens and saves. Certain applications may temporary release files during these procedures. With this feature enabled PeerLock will wait the set period of time to make sure the file is fully released before unlocking the corresponding target files.</p>
Lock File Handle	<p>Displays the handle value created that is being used to lock the temporary Lock File created by PeerLock to Interact with other Peer Software Products. If the Interact features are disabled then this will display 'None'.</p>
Locked	<p>Display the date/time when the target file was locked.</p>
Release Detected	<p>Shows the date and time when PeerLock detected the source file was closed. This value will be cleared if the file is reopened within the Idle period and the target file handle is not released.</p>
Source Access Allowed	<p>Displays the permissions that are allowed on the opened source file.</p>
Source Attributes	<p>Shows the attributes of the source file.</p>
Source File Path	<p>Displays the file name complete with folder path for the source file that has been detected as an open file.</p>
Source Handle	<p>Displays the handle value created when the source file was opened.</p>
Source Modified	<p>Shows the modified date/time of the source file when it was detected as being open.</p>
Source Open Mode	<p>Displays the permissions that were used to open the source file.</p>
Target Access Allowed	<p>Displays the permissions that are allowed on the opened target file which are applied by PeerLock.</p>
Target File Path	<p>Shows the file name complete with folder path for a target file that is locked, if the file exists and can be locked.</p>
Target Handle	<p>Display the handle value created that is being used to lock the target file by PeerLock.</p>
Target Open Mode	<p>Displays the permissions that were granted when the target file was locked by PeerLock.</p>
Temporary Releases	<p>Shows the number of times the source file was closed during the Idle period.</p>

1.6.2 Released List

Target File Path	Released	Duration	Accessed By	Target Access All...	Source File Path	Job Number
\\delt1500\C\$\P...	11/17/2011 3:4...	00:01:06	MonikaC	No Access	D:\Projects\eng...	2
\\delt1500\C\$\P...	11/17/2011 3:4...	00:01:06	MonikaC	No Access	D:\Projects\eng...	2

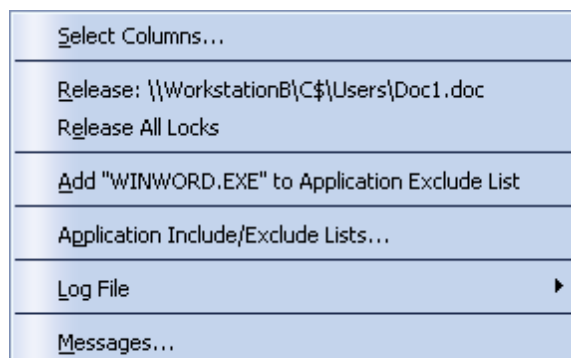
Released List Columns

This panel displays a list of the top 100 recently released files and all information pertaining to the locking and releasing of those files including why the file was released (i.e. Manually, Locking Stopped, PeerLock Stopped or the Source File was released). The columns displayed on this panel can be shown/hidden by choosing Column Selections... from the [Lock List Popup Menu](#). You may also reposition the columns simply by dragging them to a desired position. The default columns are Target File Path, Locked, Duration, Accessed By, Target Access Mode, and Source File Path.

#Locks	Displays the number of locks on the source.
Accessed By	The name of the user who has opened the file or accessed the resource.
Application	Displays the application that has been detected as opening the source file.
Detection Type	This column represents the PeerLock detection mode used to detect what source files are locked/opened. This will either be File Server Mode Detection or Local Detection. Note: Starting with version 3.0, PeerLock supports File Server Mode Detection only.
Duration	Displays the amount of time that the source file has been opened.
Idle Time	Shows the amount of time the target file will remain locked once the source file has been released. When the source file is closed PeerLock will wait the number of Idle Time seconds specified before releasing the target file. During the Idle Time period the file entry in the Locked list will be highlighted Yellow. The Idle Time value can be set in the Release Options dialog. This feature is intended to protect the releasing of files during file opens and saves. Certain applications may temporary release files during these procedures. With this feature enabled PeerLock will wait the set period of time to make sure the file is fully released before unlocking the corresponding target files.
Lock File Handle	Displays the handle value created that is being used to lock the temporary Lock File created by PeerLock to Interact with other Peer Software Products . If the Interact features are

	disabled then this will display 'None'.
Locked	Display the date/time when the target file was locked.
Release Detected	Shows the date and time when PeerLock detected the source file was closed. This value will be cleared if the file is reopened within the Idle period and the target file handle is not released.
Source Access Allowed	Displays the permissions that are allowed on the opened source file.
Source Attributes	Shows the attributes of the source file.
Source File Path	Displays the file name complete with folder path for the source file that has been detected as an open file.
Source Handle	Displays the handle value created when the source file was opened.
Source Modified	Shows the modified date/time of the source file when it was detected as being open.
Source Open Mode	Displays the permissions that were used to open the source file.
Target Access Allowed	Displays the permissions that are allowed on the opened target file which are applied by PeerLock.
Target File Path	Shows the file name complete with folder path for a target file that is locked, if the file exists and can be locked.
Target Handle	Display the handle value created that is being used to lock the target file by PeerLock.
Target Open Mode	Displays the permissions that were granted when the target file was locked by PeerLock.
Temporary Releases	Shows the number of times the source file was closed during the Idle period.

1.6.3 Lock/Release List Popup Menu



Lock List Popup Menu

Display the Lock/Release List Popup Menu by right-clicking on the Lock or Release panel.	
Select Columns...	Displays a dialog from which you can choose to show/hide specific Lock or Release list columns. At least one column must be shown at all times.
Release	PeerLock will release the lock handle of the currently selected target file. When using this option the target file will not enter the Idle period before being released. If using Local Detection, the target file will be permanently released. The source file would need to be closed and re-opened for the lock handle to be re-applied to the target file. When using Server Detection, the target file will be temporarily released. If at the next Lock Frequency interval PeerLock detects that the source file is opened, it will re-apply the lock handle to the target file. Once an item is released it will be added to the Release list. Note: Starting with version 3.0, PeerLock supports File Server Mode Detection only.
Release All Locks	PeerLock will release the lock handles of all the files currently locked on the target folders. When using this option the target files will not enter the Idle period before being released. If using Local Detection, the target files will be permanently released. The source files would need to be closed and re-opened for the lock handles to be re-applied to the target files. When using Server Detection, the target files will be temporarily released. If at the next Lock Frequency interval PeerLock detects that the source files are opened, it will re-apply the lock handles to the target files. Once an item is released it will be added to the Release list. Note: Starting with version 3.0, PeerLock supports File Server Mode Detection only.
Add x to Application Exclude List	Provides a quick way to exclude/include an application from triggering an event detection used to determine open source files. This option will cause PeerLock to restart.
Application Include/Exclude Lists...	Opens an Application Include/Exclude dialog box into which application names may be entered to be excluded/included from triggering an event detection used to determine open source files. PeerLock would need to be restarted for any change to take effect.
Log File	Provides quick access to View the log file as well as ability to Clear it.
Messages...	Opens the Message dialog to display any messages that have occurred during the current operation.

1.6.4 Lock/Release List Status Bar

Messages: 1 | There is 1 Failed Connection: \\machine1\C\$ (Failed Connections will be retried every 600 seconds - Next Retry: 00:08:06) | Running - Active Locks : 12

Lock/Release List Status Bar	
This bar can be shown/hidden via the View menu.	
Messages	By clicking on the messages label you can view the Message dialog for more information about the messages you are receiving. When there are new messages, the label color will change to Red, once the message is viewed the label color will be reset to Black.
Center Status Display	Displays information/messages when connecting to machines. This section will contain information about connection attempts and Retry Failed Connections .
Active Lock Count	Shows the status of PeerLock. It will display 'Inactive' if PeerLock is not configured and or set to start.

1.7 Other Features

1.7.1 Shortcuts

Add to Desktop	Ctrl+D
Add to Startup Folder	Ctrl+S
Show Startup Folder	

Shortcuts
Command Line Arguments may be applied through a shortcut or the Configuration file. To create a shortcut from the interface and access the command line you want you can:
<ol style="list-style-type: none"> 1. Set up the Job you wish to run and run it from the interface. 2. Go to the File > Shortcuts menu 3. Select Add to Desktop or Add to Startup Folder 4. Right click on the Shortcut and select Properties 5. Go to the Target field and view/copy the command line string. For example: The following arguments are appended to the end of the command line followed by a space and forward slash (i.e. /A). A space and forward slash are also used to separate each additional argument (i.e. /A /DC+).

1.7.2 Configuration File

```

[Product]
Name=PeerLock
Version=2.0
Compiled=September 20, 2007
AppLevel=2
Platform=WINNT
windir=C:\WINDOWS

[AppInfo]
Window State=Normal
Left=815
Top=18
Width=750

```

CFG File

This file is located in the PeerLock installation folder by default (C:\Program Files\PeerLock\PLDef.cfg).

By default PeerLock stores all of its settings in a configuration file called PLDef.cfg. This file may be modified with a text editor but doing so is not recommended. Also, you can load from an alternate configuration file by adding a file name that has a *.cfg extension to your command line (i.e. MyPLConfig.cfg).

1.8 Command Line Arguments

1.8.1 Command Line Arguments

The applications Command Line Mode offers users the ability to configure a truly "hands-off" installation, where operation and distribution occurs from within an easily manageable, administrative environment. This mode allows Actions to be executed from logon scripts, system batch or command (CMD) files, detailed shortcuts, and shell commands.

Notes:

1. For the command line arguments described in this topic, note that attention is paid to punctuation, to the order in which arguments are entered, and that appropriate spaces are used to separate these arguments. Follow the format outlined in the examples provided.
2. Command Line Arguments can be added to the application [Shortcut](#)

Auto Start

/A

Auto Start: This argument is used to start PeerLock automatically.

/AM

Minimized*: This argument is used to run PeerLock automatically and minimized.

Examples:

/A

Auto Start

/AM

Auto Start - Minimized

Detect/Lock Options

/DC[+-]

Check For File Name In Caption: Looks for the source file name in all open application captions when deciding if a file is open or not. This option is on by default.

/DE[+-]

Strip File Extension (Check For File Name In Caption): When using the Check For File Name In Caption option this option will strip off the file extension when looking for file names in all open application captions.

/DP[+-]

Strip File Path (Check For File Name In Caption): When using the Check For File Name In Caption option this option will strip off the file path when looking for file names in all open application captions. This option is on by default.

/DD[+-]

Detect Files when Target Does Not Exist (Create Target Stub File): If the opened source file does not have a corresponding target file, PeerLock will create a 0 size stub file on the remote target location(s). The stub file will be removed/cleared upon release of the source file. When using PeerSync with this option enabled, the stub file will be excluded by PeerSync. This feature will prevent files from being added to the target while its corresponding source file is open. By default this option is enabled.

/DL+

Allow No Access: Uses an exclusive lock on target files, meaning once the lock is applied no other applications can get a lock on the target file. This option is disabled by default.

/DL-

Allow Read Access: The lock set on target files will allow for other applications to still obtain a handle and get their own lock on the file. This option is disabled by default.

/DL>

Allow Access based on Source File: PeerLock will take into account the source file access and replicate the same exact handles to the target files. PeerLock will apply the same type of handle to the target file that is currently applied to the source file. This method will lock out users from the target file in the same fashion they are locked out from the source. This option is beneficial when working with applications that allow for various types of file access (i.e. some files are opened for read and write access while other related files will be opened for read only access). This option is enabled by default.

/DI[+-]

Interact with PeerSync and/or Save-N-Sync***: Communicates/Notifies PeerSync and/or Save-N-Sync to exclude source files that are detected as open until the file has been released. This option is off by default and the caption of the option will display the name of the Peer Software product that is installed if applicable.

/DJ[+-]

Interact with Remote PeerLocks***: Communicates/Notifies remote PeerLocks that may be running on your target machine(s) to exclude the detection of the local PeerLock locking files on the remote machine. This option should be enabled when running PeerLock on multiple machines pointing at each other. This option is off by default.

/DO[+-]

Check for File Open On Detection: This option will validate for a false detection of an open file by doing a secondary validation that the file is open on detection of the open file. This option is off by default.

/DS[+-]

Use File Server Mode Detection: If enabled, detection of locked files will be monitored by connections to the server made from other machines. When this option is enabled files opened by the local machine will not be detected but open files will be detected and locked on the start of PeerLock. If this option is not enabled detection of locked files will be monitored by a device driver running on the local machine that watches for changes made by any machine including the local machine but open files will not be detected and locked on the start of PeerLock. This option is on by default.

/DM:n

Set Detection Method Level (n = 1 - 31): PeerLock uses up to five methods of detection to determine if a file is open and in use. Using a value between 1 and 31 will enable any combination of the five methods. The first four methods are used by default (a value of 15 {1 + 2 + 4 + 7}). Each method is represented by 2 to the x value:

- 1 = Method 1
- 2 = Method 2
- 4 = Method 3
- 8 = Method 4
- 16 = Method 5

/DT[+-]

Use Local Detection: Detect source file open events that occur locally. Changes will be detected in Real-Time as source files are opened. Files opened prior to PeerLock running will not be detected. This option is disabled by default.

Note: Starting with version 3.0, PeerLock supports File Server Mode Detection only.

/DN[+-]

File Server Mode Detection: Detect source file open events that occur across the network. It will not do real time detection as the Local Detection mode. It will poll opened files from the Windows Open Files list based on the [Lock_Frequency](#). Therefore it will be able to detect files that were opened prior to PeerLock being started. This option is enabled by default.

Note: Starting with version 3.0, PeerLock supports File Server Mode Detection only.

Examples:

/DC-E+P+D+L+I-O-S+M15

/DC-E-P-D-L-I-O-M31

Default Settings on servers

All Options Off and All Detection Methods On

Release Options

/RS[+-]

Trigger Event: This option will check to see if the source file has been updated by looking at the current modified date/time stamp versus the stored modified date/time stamp. If the file has been updated PeerLock will trigger an event to be detected by synchronization products to update the corresponding target file(s) with the updated source file upon release from the [Lock List](#).

/RA[+-]

Wait for Associated Application to Close: This option will check to see if the application that opened the source file is still running before releasing the corresponding target file(s) from the [Lock List](#). This option is useful when an application does not retain a handle on the files that are opened by itself. When this option is enabled, the target files will not be released until all instances of the application terminate. By default some application names are excluded from this check (i.e. Explorer.exe). The default exclusion list for this option can be modified by editing the configuration file (PLDef.cfg).

/RF:n

Release Frequency (n = frequency in milliseconds): Sets the frequency to check for source files that have been closed or released. The default is every 3000 milliseconds or 3 seconds.

/RI:n

Set Release Idle Time: Represents the interval, in seconds, of how long the target file will remain locked once the source file has been released. When the source file is closed PeerLock will wait n seconds before releasing the target file. During this period the file entry in the [Locked](#) list will be highlighted Yellow. This feature is intended to protect the releasing of files during file opens and saves. Certain applications may temporary release files during these procedures. With this feature enabled PeerLock will wait the set period of time to make sure the file is fully released before unlocking the corresponding target files. Once an item is released it will be added to the [Release](#) list. The default value is 5 seconds.

/RT+

Trigger Event - Include files that have not been updated: This option will allow for triggering of files that may have been open but not updated. By default this setting is disabled.

/RL:n

Set Lock Frequency: Represents the interval, in milliseconds, of how often PeerLock will check for locked source files. Once PeerLock detects that a source file is locked it will lock the corresponding target files. Default value is 1000 ms.

Examples:

/RS+A-F3000

Trigger Event On, Wait for Associated Application to Close Off and Check for Released Files every 3 Seconds (Default)

/RS-A+F1000

Trigger Event Off, Wait for Associated Application to Close On and Check for Released Files every 1 Second

Performance	
<u>/PF:n</u>	
Service Thread Sleep Frequency: Represents the sleep frequency value, in milliseconds, of the main service thread. The higher the frequency the more CPU will be used. By default this value is 50 ms. To achieve faster PeerLock response rate, increase the Sleep Frequency and decrease the Sleep Value. To achieve lower CPU usage, decrease the Sleep Frequency and increase the Sleep Value.	
<u>/PR:n</u>	
Retry Failed Connections (n = frequency in milliseconds): PeerLock will store failed connections and retry them on a ten minute cycle. This should improve overall performance when connection losses occur.	
Examples:	
If n = 0	Will check connection failures and not retry until restarting the locking.
If n = -1	Will try to connect on every event. Only recommended to use when having intermitted connection failures.
If n = other positive value	Represents in milliseconds the retry frequency. Default is 60000 ms = every 10 minutes Minimum value is 1000 ms = every 1 second
<u>/PV:n</u>	
Service Thread Sleep Value: Represents the sleep value, in milliseconds, of the main service thread. By default this value is 25 ms. To achieve faster PeerLock response rate, increase the Sleep Frequency and decrease the Sleep Value. To achieve lower CPU usage, decrease the Sleep Frequency and increase the Sleep Value.	
Examples:	
/PF50	Default Service Thread Sleep Frequency
/PV25	Default Service Thread Sleep Value
/PR60000	Default Retry Failed Connections setting

Internal File Management	
<u>/JL[+-]</u>	
Cache Locked File History: Maintains a list of all the files locked by PeerLock in the PeerLock installation folder (...PeerLock\Cache\LFCache.txt). If the Clear Cache at start option is enabled, at the start-up of PeerLock, it will refer to this list to clean up the stub files and lock files left behind on the target folder. Alternatively this can be done manually by hitting the clear cache button. This setting is enabled by default.	
<u>/JS[+-]</u>	
Clear Cache At Start: Clears out the cache file located in the Cache folder in the PeerLock installation folder when PeerLock is starting and begins to lock files down. This setting is enabled by default.	

Application Include/Exclude	
<p><u>/I:a1;a2..an</u> Include Applications** (a = Applications to Include during Detection): This argument is used to build a list of applications to Include during detection. For multiple applications use a semi-colon delimiter. By default all applications are included. This can also be configured from the interface via the Application Include/Exclude Lists.</p>	
<p>Examples:</p>	
/I:*	Include detection of file opens from all applications
/I:WINWORD.EXE;EXCEL.EXE	Include detection of file opens from MS Word and MS Excel
<p><u>/E:a1;a2..an</u> Exclude Applications** (a = Applications to Exclude during Detection): This argument is used to build a list of applications to Exclude during detection. For multiple applications use a semi-colon delimiter. By default a list of applications are excluded including Explorer, PeerLock, PeerSync and Save-N-Sync. This can also be configured from the interface via the Application Include/Exclude Lists.</p>	
<p>Examples:</p>	
/E:	Do not exclude any applications
/E:EXPLORER.EXE;PeerLock.EXE	Only exclude PeerLock and PeerSync

Notes:

1. Any arguments containing spaces must be enclosed by quotes.
2. Most of these options can be set from the interface via the [Main Menu](#).
3. * The run minimized argument is not available during evaluation.
4. ** By Observing at the [Lock List Application Column](#) you can determine what applications you may want to Include or Exclude.

1.9 Product Information

1.9.1 Product Editions/Licensing

Product Information	
Features	<ul style="list-style-type: none"> • Will run on Servers • Allows up to 255 Source Selections • Allows up to 100 Targets per Source Selection • Can Run as a Service • Feature to Create/View and Close Folder Selections in MS Windows Explorer
Licensing	<p>PeerLock can be licensed for single or multiple users.</p> <p>A single user license, by default, comes with right to install/execute the software on one PC and connect to one or more</p>

	<p>remote PCs or unlimited local drives. A license must be purchased for each PC where the product will be installed, executed or launched. This also applies to Enterprise installations that run the software off a network file server.</p> <p>For more information about Product Levels and Licensing please visit our web site: http://www.peersoftware.com</p>
--	--

Note: Peer Software is quite flexible in assembling different combinations of option packages than the ones listed here for enterprise installations with customers' requirements in mind. Please contact us for such requests and for more detail of the PeerLock option packages that are available.

1.9.2 License

YOU SHOULD READ CAREFULLY THE FOLLOWING TERMS AND CONDITIONS BEFORE INSTALLING, USING OR DISTRIBUTING THIS SOFTWARE. INSTALLING, USING OR DISTRIBUTING THIS SOFTWARE INDICATES ACCEPTANCE OF THESE TERMS AND CONDITIONS. IN THIS AGREEMENT, "YOU" MEANS YOU AS AN INDIVIDUAL IF YOU ARE USING THIS SOFTWARE FOR PERSONAL USE. IF YOU ARE USING THE SOFTWARE ON EQUIPMENT OWNED OR OPERATED BY A COMPANY OR ORGANIZATION (COLLECTIVELY "COMPANY"), BY ACCEPTING THIS AGREEMENT, YOU REPRESENT THAT YOU ARE DULY AUTHORIZED TO ACCEPT THIS AGREEMENT ON BEHALF OF YOUR COMPANY.

COPYRIGHT

The software programs (hereafter the "Software") and documentation (hereafter the "Documentation") is copyrighted and remains the property of Peer Software, Inc. All rights are reserved.

LICENSE

Peer Software, Inc. hereby grants you (hereafter the "User") a limited, non-exclusive, non-transferable license to install and use the Software and accompanying Documentation contained in the trialware distribution package (hereafter called the "Trialware Package") you received (THE "Original Distribution") for your internal business purposes only. The Trialware Package consists of copies of the Software and Documentation received via an electronic transfer mechanism or an electronic storage medium including, but not limited to, diskette, hard disk, removable disk, tape or optical devices such as CD-ROM or WORM. This license to install and use the Software and Documentation is conditioned upon User's compliance with the terms of this Agreement.

You may install and use the Trialware Package on one or more computers provided there is no chance that it will be used simultaneously on more than one computer. If you need to use the Software on more than one computer simultaneously or on a network, please contact Peer Software, Inc. for information about network licenses.

The Software is protected by trade secret and copyright laws and international treaty provisions. You are not obtaining title to the Software or Documentation or any copyright or other intellectual property rights. You further acknowledge that title and full ownership rights to the Software and Documentation will remain the exclusive property of Peer Software, Inc. or

its suppliers, and You will not acquire any ownership rights to the Software. You may not sublicense, lease, rent, sell, convey, translate, modify, decompile, incorporate into another product, convert to another programming language, reverse engineer or disassemble the Software or Documentation for any purpose. You may not modify, or create derivative works based in whole or in part upon, the Software. You agree to not remove, obscure, or alter Peer Software, Inc.'s or any third party's copyright notice, trademarks, or other proprietary rights notices affixed to or contained within or accessed in conjunction with or through the Software and Documentation. Peer Software, Inc. reserves the right to periodically conduct audits upon advance written notice to verify compliance with the terms of this Agreement.

Once a license is purchased from Peer Software, Inc., the Trialware Package will be authorized to function as the full working version of the Software with access to all licensed features.

NETWORK LICENSE

Multiple users on a network (e.g. a LAN) requiring access to the Software and Documentation must purchase a Network License. Two forms of Network Licenses are offered, a Site License and Enterprise or Concurrent User License. With a Site License, any user who accesses the Software or Documentation requires a user license, regardless of the frequency of use. Once a Site License is purchased Software and Documentation may be copied to all users who have been licensed. Site Licenses are customized for each purchase. The license is based on a quantity of simultaneous users and or CPU installations.

The Concurrent User License allows the licensed number of users to simultaneously access the Software and Documentation. The User agrees to operate metering software, which restricts the simultaneous number of users to the quantity purchased. The Software and Documentation must be installed on network servers under the control of metering software.

Both Site and Concurrent User Licenses allow installation of the Software and Documentation to any number of servers on any number of geographic sites, limited only by the quantity of licenses purchased.

TERM AND TRIAL PERIOD

You are permitted to use the Trialware Package for a trial period (hereafter the "Trial Period") of thirty (30) days or 30 uses (which ever comes first) after receipt of the Trialware Package. After such time, if you continue to use the Trialware Package, you must register your copy with Peer Software, Inc. Failure to register after the Trial Period constitutes termination of this license. Upon registration, a password (hereafter called the "Password") will be provided to eliminate the registration reminder screen.

This license is effective until terminated. You may terminate it by destroying the Software, Documentation, and all copies thereof. This license will also terminate if you fail to comply with any of the terms or conditions herein. You agree, upon such termination, to destroy all Software, Documentation, and copies thereof. Upon request, You agree to certify in writing that all copies of the Software and Documentation have been destroyed.

LIMITED WARRANTY

THE SOFTWARE AND DOCUMENTATION IS PROVIDED "AS IS" WITHOUT WARRANTY OF ANY KIND. PEER SOFTWARE, INC. DISCLAIMS ALL WARRANTIES RELATING TO THIS SOFTWARE, WHETHER EXPRESSED OR IMPLIED, INCLUDING BUT NOT

LIMITED TO ANY IMPLIED WARRANTIES OF MERCHANTABILITY, FITNESS FOR A PARTICULAR PURPOSE, AND INFRINGEMENT AND ALL SUCH WARRANTIES ARE EXPRESSLY AND SPECIFICALLY DISCLAIMED.

EXCLUSIVE REMEDY

YOUR EXCLUSIVE REMEDY AND PEER SOFTWARE, INC. ENTIRE LIABILITY ARISING FROM OR IN CONNECTIONS WITH THE SOFTWARE, DOCUMENTATION, AND/OR THIS LICENSE (INCLUDING WITHOUT LIMITATION FOR BREACH OF WARRANTY OR INFRINGEMENT) SHALL BE, AT PEER SOFTWARE, INC.'S OPTION, THE REPAIR OR REPLACEMENT OF THE SOFTWARE OR REFUND OF REGISTRATION FEES (IF NOTIFICATION OF PROBLEM IS WITHIN 30 DAYS OF PURCHASE).

LIMITATIONS OF LIABILITY

UNDER NO CIRCUMSTANCES OR LEGAL THEORY, WHETHER IN TORT, CONTRACT, OR OTHERWISE, SHALL PEER SOFTWARE, INC. OR ANYONE ELSE WHO HAS BEEN INVOLVED IN THE CREATION, PRODUCTION, OR DELIVERY OF THIS SOFTWARE BE LIABLE TO YOU OR TO ANY OTHER PERSON FOR ANY INDIRECT, SPECIAL, INCIDENTAL, OR CONSEQUENTIAL DAMAGES (EVEN IF PEER SOFTWARE, INC. SHALL HAVE BEEN ADVISED OF THE POSSIBILITY OF SUCH DAMAGES), INCLUDING, WITHOUT LIMITATION, DAMAGES FOR LOSS OF GOODWILL, WORK STOPPAGE, COMPUTER FAILURE OR MALFUNCTION, OR, FOR ANY OTHER DAMAGES OR LOSSES OF ANY NATURE. IN NO EVENT WILL PEER SOFTWARE, INC. BE LIABLE FOR ANY DAMAGES IN EXCESS OF THE LIST PRICE PEER SOFTWARE, INC. CHARGES FOR A LICENSE TO THE SOFTWARE.

Some states do not allow the exclusion of the limit of liability for consequential or incidental damages, so the above limitation may not apply to you.

BACK-UP

You may make one copy of the Trialware Package for backup purposes only.

DISTRIBUTION

You may distribute the Trialware Package to others via an electronic transfer mechanism or electronic storage media provided that no files are deleted from the Original Distribution Trialware Package or are modified in any way. Files may be added to the Trialware Package expressly for the purpose of identifying the party distributing the Trialware Package. You may also place the Trialware Package into any archive or compressed format for ease of distribution.

You may not distribute the product Registration Key to others under any circumstances.

GENERAL

Export of the Software may be subject to compliance with the rules and regulations promulgated from time to time by the Bureau of Export Administration, United States Department of Commerce, which restrict the export and re-export of certain products and technical data. If the export of the Software is controlled under such rules and regulations, then the Software shall not be exported or re-exported, directly or indirectly, (a) without all export or re-export licenses and United States or other governmental approvals required by

any applicable laws, or (b) in violation of any applicable prohibition against the export or re-export of any part of the Software. Some countries have restrictions on the use of encryption within their borders, or the import or export of encryption even if for only temporary personal or business use. You acknowledge that the implementation and enforcement of these laws is not always consistent as to specific countries. Although the following countries are not an exhaustive list there may exist restrictions on the exportation to, or importation of, encryption by: Belgium, China (including Hong Kong), France, India, Indonesia, Israel, Russia, Saudi Arabia, Singapore, and South Korea. You acknowledge it is your ultimate responsibility to comply with any and all government export and other applicable laws and that Peer Software, Inc. has no further responsibility after the initial license to you within the original country of sale.

In addition, neither the Software nor the Documentation and underlying information or technology may be downloaded or otherwise exported or re-exported (i) into (or to a national or resident of) any country to which the United States has embargoed goods; or (ii) to anyone on the United States Treasury Department's list of Specially Designated Nations or the United States Commerce Department's Table of Denial Orders. By using the Software you are agreeing to the foregoing and you are certifying that you are not located in, under the control of, or a national or resident of any such country or on any such list.

This agreement shall be governed by the laws of the state of New York and shall inure to the benefit of Peer Software, Inc. and any successors, administrators, heirs, and assigns. Any action arising under this Agreement shall be filed in any state or federal court located in Suffolk county in the State of New York, and You hereby agree, acknowledge and submit to the exclusive jurisdiction and venue of such courts for the purposes of such action, waive any right You may have to object to such jurisdiction or venue.

This Agreement sets forth all rights for the user of the Software and is the entire agreement between You and Peer Software, Inc. and supersedes any other prior or contemporaneous agreements or communications with respect to the Software and Documentation. This Agreement may not be modified except by a written addendum issued by a duly authorized representative of Peer Software, Inc. No provision hereof shall be deemed waived unless such waiver shall be in writing and signed by Peer Software, Inc. or a duly authorized representative of Peer Software, Inc. If any provision of this Agreement is held invalid, the remainder of this Agreement shall continue in full force and effect. The parties confirm that it is their wish that this Agreement has been written in the English language only.

Index

- # -

#Locks (Locked List Columns) 26
 #Locks (Release List Columns) 28

- / -

/A (Auto Start) 32
 /AM (Minimized) 32
 /DC (Check For File Name In Caption) 32
 /DD (Detect Files when Target Does Not Exist) 32
 /DE (Strip File Extension) 32
 /DI (Interact with PeerSync and/or Save-N-Sync) 32
 /DJ (Interact with Remote PeerLocks) 32
 /DL (Allow Access based on Source File) 32
 /DL (Allow No Access) 32
 /DL (Allow Read Access) 32
 /DM (Set Detection Method Level) 32
 /DN (File Server Mode Detection) 32
 /DO (Check for File Open On Detection) 32
 /DP (Strip File Path) 32
 /DS (Use File Server Mode Detection) 32
 /DT (Use Local Detection) 32
 /E (Exclude Applications) 32
 /I (Include Applications) 32
 /JL (Cache Locked File History) 32
 /JS (Clear Cache At Start) 32
 /PF (Service Thread Sleep Frequency) 32
 /PR (Retry Failed Connections) 32
 /PV (Service Thread Sleep Value) 32
 /RA (Wait for Associated Application to Close) 32
 /RF (Release Frequency) 32
 /RI (Set Release Idle Time) 32
 /RL (Set Lock Frequency) 32
 /RS (Trigger Event) 32
 /RT (Trigger Event) 32

- A -

About PeerLock (Menu) 3
 Accessed By (Locked List Columns) 26
 Accessed By (Release List Columns) 28
 Action Menu: 3

Add Selection 3
 Auto Start 3
 Delete Selection 3
 Release All Locks 3
 Selections 3
 Start 3
 Stop 3
 Update Selection 3
 Active Lock Count (Status Bar) 30
 Add (Selection List Popup Menu) 15
 Add Application to Application Exclude List (Lock/Release Popup Menu) 29
 Add Selection (Dialog): 8
 Include Sub-Folders 8
 Source Selection 8
 Target Selection 8
 Add Selection (Menu) 3
 Add Selection (Status Bar) 7
 Add To Desktop (Menu) 3
 Add to Desktop (Shortcuts) 31
 Add To Startup Folder (Menu) 3
 Add to Startup Folder (Shortcuts) 31
 Agreement 38
 All Global Options... (Menu) 3
 Allow Access Based on Source File (Lock Options) 16
 Allow No Access (Lock Options) 16
 Allow Read Access (Lock Options) 16
 Alternate Configuration File 32
 Application (Locked List Columns) 26
 Application (Release List Columns) 28
 Application Include/Exclude (Dialog): 21
 Exclude 21
 Include 21
 Application Include/Exclude Lists... (Lock/Release Popup Menu) 29
 Application Include/Exclude Lists... (Menu) 3
 Application Priority Selection (Performance) 19
 Arguments 32
 Auto Display (Message Dialog) 14
 Auto Start (Menu) 3

- C -

Cache Locked File History 24
 Center Status Display (Status Bar) 30
 Check for locked source files every x second(s) (Lock Options) 16

Check for released source files every x second(s)
 (Release Options) 18
 Clear (Reporting) 25
 Clear Cache at Start 24
 Clear Log File (Menu) 3
 Clear Message List (Message Dialog) 14
 Clear/View Folders (Menu) 3
 Close All Folders (Menu) 3
 Close Folder Selections 37
 Close Message Display (Message Dialog) 14
 Command Line Arguments 32
 Configuration File 32
 Connect As (Network Logon) 13
 Contact 1
 Copyright 38
 Count (Performance) 19
 CPU 32
 Create System Info File on the Desktop... (Menu) 3
 Create/View Folder Selections 37

- D -

Delete (Selection List Popup Menu) 15
 Delete Selection (Menu) 3
 Delete Selection (Status Bar) 7
 Detection Options... (Menu) 3
 Detection Type (Locked List Columns) 26
 Detection Type (Release List Columns) 28
 Duration (Locked List Columns) 26
 Duration (Release List Columns) 28

- E -

Editions 37
 Evaluation Menu:
 About PeerLock 3
 Register PeerLock 3
 Event Detection (Menu) 3
 Event Detection Status (Menu) 3
 Event Thread Settings (Performance) 19
 Event Thread Settings: 19
 Set Access Event Thread Count (Performance)
 19
 Set Access Event Thread Timeout (Performance)
 19
 Thread Count (Performance) 19
 Thread Timeout (Performance) 19
 Exceptions (Dialog): 12

Exclude Files 12
 Exclude Folders 12
 Include Files 12
 Exclude (Application) 21
 Exclude (Selection List Columns) 6
 Exclude Files (Exceptions Dialog) 12
 Exclude Folders (Exceptions Dialog) 12
 Exit (Menu) 3

- F -

Features by Product 37
 File Menu (Message Dialog): 14
 Close Message Display 14
 Terminate Application 14
 File Menu: 3
 Add To Desktop (Shortcuts) 3
 Add To Startup Folder (Shortcuts) 3
 Exit 3
 Install Service 3
 Save Defaults 3
 Service 3
 Shortcuts: 3
 Show Services 3
 Show Startup Folder (Shortcuts) 3
 Uninstall Service 3
 Folders (Menu) 3
 Folders (Selection List Popup Menu) 15

- G -

Getting Started:
 Contact 1
 How It Works 1
 Installation 1
 Registration 1
 Support 1
 Upgrade 1

- H -

Help (Toolbar) 6
 Help Menu: 3
 About PeerLock 3
 Create System Info File on the Desktop... 3
 Online Resources 3
 PeerLock Help 3

Help Menu: 3
 Register 3
 How It Works 1

- I -

Idle Time (Locked List Columns) 26
 Idle Time (Release List Columns) 28
 Include (Application) 21
 Include (Selection List Columns) 6
 Include Files (Exceptions Dialog) 12
 Include files that have not been updated (Release Options) 18
 Include Manually Released Files (Release Options) 18
 Include Sub-Folders (Add Selection Dialog) 8
 Include Sub-Folders (Update Selection Dialog) 10
 Install Service (Menu) 3
 Installation 1
 Interact with PeerSync and/or Save-N-Sync 20
 Interact with Remote PeerLocks 20
 Internal File Management (Dialog): 24
 Cache Locked File History 24
 Clear Cache at Start 24
 Internal File Management... (Menu) 3

- L -

License 38
 Licensing 37
 Limitations of Liability 38
 Local Detection Pre Release Options: 18
 Wait for Associated Application to Close 18
 Lock File Handle (Locked List Columns) 26
 Lock File Handle (Release List Columns) 28
 Lock Frequency: 16
 Check for locked source files every x second(s) 16
 Lock List Status (Menu) 3
 Lock Options (Dialog): 16
 Allow Access Based on Source File 16
 Allow No Access 16
 Allow Read Access 16
 Check for locked source files every x second(s) 16
 Lock Options... (Menu) 3
 Lock Type to Apply to Target: 16
 Allow Access Based on Source File 16

Allow No Access 16
 Allow Read Access 16
 Lock/Release Popup Menu: 29
 Add Application to Application Exclude List 29
 Application Include/Exclude Lists... 29
 Log File 29
 Messages... 29
 Release All Locks 29
 Release: file 29
 Select Columns.... 29
 Locked (Locked List Columns) 26
 Locked List: 26
 #Locks 26
 Accessed By 26
 Application 26
 Detection Type 26
 Duration 26
 Idle Time 26
 Lock File Handle 26
 Locked 26
 Release Detected 26
 Source Access Allowed 26
 Source Attributes 26
 Source File Path 26
 Source Handle 26
 Source Modified 26
 Source Open Mode 26
 Target Access Allowed 26
 Target File Path 26
 Target Handle 26
 Target Open Mode 26
 Temporary Releases 26
 Locked(Release List Columns) 28
 Log File (Lock/Release Popup Menu) 29
 Log File (Menu) 3
 Log File [View/Clear] (Message Dialog) 14
 Logon Settings 13

- M -

Max Count (Message Dialog) 14
 Menu: 3
 Action 3
 Evaluation 3
 File 3
 Help 3
 Options 3
 View 3

Message Count (Message Dialog) 14
 Message Dialog: 14
 File 14
 Max Count 14
 Message Count 14
 Options 14
 Messages (Status Bar) 30
 Messages... (Lock/Release Popup Menu) 29
 Messages... (Menu) 3

- N -

Network Logon: 13
 Connect As 13
 Password 13

- O -

Online Resources (Menu) 3
 Options (Toolbar) 6
 Options Menu (Message Dialog): 14
 Auto Display 14
 Clear Message List 14
 Log File [View/Clear] 14
 Show Application 14
 Show Icon on Tray 14
 Options Menu: 3
 All Global Options... 3
 Application Include/Exclude Lists... 3
 Detection Options... 3
 Internal File Management... 3
 Lock Options... 3
 Product Interaction... 3
 Release Options... 3
 Reporting... 3

- P -

Password (Network Logon) 13
 PeerLock Help (Menu) 3
 Performance 32
 Performance (Dialog): 19
 Application Priority Selection 19
 Count 19
 Event Thread Settings 19
 Set Access Event Thread Count 19
 Set Access Event Thread Timeout 19

Thread Count 19
 Thread Timeout 19
 Timeout 19
 PLDef.cfg 32
 Post Release Options: 18
 Include files that have not been updated 18
 Include Manually Released Files 18
 Reapply Source Modified Time 18
 Trigger Event on Release of Files 18
 Update Source Modified Time 18
 Pre Release Options: 18
 Set Idle time before releasing files to x second(s)
 18
 Product Editions 37
 Product Features by Edition 37
 Product Interaction (Dialog): 20
 Interact with PeerSync and/or Save-N-Sync 20
 Interact with Remote PeerLocks 20
 Product Interaction... (Menu) 3
 Product Licensing 37

- R -

Reapply Source Modified Time (Release Options)
 18
 Register (Menu) 3
 Register PeerLock (Menu) 3
 Registration 1
 Release All Locks (Lock/Release Popup Menu) 29
 Release All Locks (Menu) 3
 Release Detected (Locked List Columns) 26
 Release Detected (Release List Columns) 28
 Release Frequency: 18
 Check for released source files every x second(s)
 18
 Release List: 28
 #Locks 28
 Accessed By 28
 Application 28
 Detection Type 28
 Duration 28
 Idle Time 28
 Lock File Handle 28
 Locked 28
 Release Detected 28
 Source Access Allowed 28
 Source Attributes 28
 Source File Path 28

- Release List: 28
 - Source Handle 28
 - Source Modified 28
 - Source Open Mode 28
 - Target Access Allowed 28
 - Target File Path 28
 - Target Handle 28
 - Target Open Mode 28
 - Temporary Releases 28
 - Release Options (Dialog): 18
 - Check for released source files every x second(s) 18
 - Include files that have not been updated 18
 - Include Manually Released Files 18
 - Reapply Source Modified Time 18
 - Set Idle time before releasing files to x second(s) 18
 - Trigger Event on Release of Files 18
 - Update Source Modified Time 18
 - Wait for Associated Application to Close 18
 - Release Options... (Menu) 3
 - Release: file (Lock/Release Popup Menu) 29
 - Remote Source Selections 37
 - Reporting (Dialog): 25
 - Clear 25
 - Set Maximum Log File Size to x Bytes 25
 - Set Number of Backup Files to x 25
 - View 25
 - Reporting... (Menu) 3
 - Run as a Service 37
- S -**
- Save (Toolbar) 6
 - Save Defaults (Menu) 3
 - Select Columns... (Selection List Popup Menu) 15
 - Select Columns.... (Lock/Release Popup Menu) 29
 - Selection Count Status (Status Bar) 7
 - Selection Limits 37
 - Selection List (Menu) 3
 - Selection List (Overview) 6
 - Exclude 6
 - Include 6
 - Source 6
 - Source Connect As 6
 - Sub-Folders 6
 - Target 6
 - Target Connect As 6
 - Selection List (Status Bar) 7
 - Selection List Popup Menu: 15
 - Add 15
 - Delete 15
 - Folders 15
 - Select Columns... 15
 - Update 15
 - Selection List Status (Menu) 3
 - Selections (Menu) 3
 - Service (Menu) 3
 - Service Options 37
 - Set Access Event Thread Count (Performance) 19
 - Set Access Event Thread Timeout (Performance) 19
 - Set Idle time before releasing files to x second(s) (Release Options) 18
 - Set Maximum Log File Size to x Bytes (Reporting) 25
 - Set Number of Backup Files to x (Reporting) 25
 - Shortcuts (Menu) 3
 - Shortcuts: 31
 - Add to Desktop 31
 - Add to Startup Folder 31
 - Show Startup Folder 31
 - Show Application (Message Dialog) 14
 - Show Icon on Tray (Message Dialog) 14
 - Show Services (Menu) 3
 - Show Startup Folder (Menu) 3
 - Show Startup Folder (Shortcuts) 31
 - Sleep Frequency 32
 - Sleep Value 32
 - Source (Add Selection Dialog) 8
 - Source (Selection List Columns) 6
 - Source (Update Selection Dialog) 10
 - Source Access Allowed (Locked List Columns) 26
 - Source Access Allowed (Release List Columns) 28
 - Source Attributes (Locked List Columns) 26
 - Source Attributes (Release List Columns) 28
 - Source Connect As (Selection List Columns) 6
 - Source File Path (Locked List Columns) 26
 - Source File Path (Release List Columns) 28
 - Source Folder Selection Limits 37
 - Source Handle (Locked List Columns) 26
 - Source Handle (Release List Columns) 28
 - Source Modified (Locked List Columns) 26
 - Source Modified (Release List Columns) 28
 - Source Open Mode (Locked List Columns) 26
 - Source Open Mode (Release List Columns) 28
 - Start (Menu) 3

Start (Toolbar) 6
 Status Bar: 7, 30
 Active Lock Count 30
 Add 7
 Center Status Display 30
 Delete 7
 Messages 30
 Selection Count Status 7
 Update 7
 Status Bars (Menu) 3
 Stop (Menu) 3
 Stop (Toolbar) 6
 Sub-Folders (Selection List Columns) 6
 Support 1

- T -

Target (Add Selection Dialog) 8
 Target (Selection List Columns) 6
 Target (Update Selection Dialog) 10
 Target Access Allowed (Locked List Columns) 26
 Target Access Allowed (Release List Columns) 28
 Target Connect As (Selection List Columns) 6
 Target File Path (Locked List Columns) 26
 Target File Path (Release List Columns) 28
 Target Folder Selection Limits 37
 Target Handle (Locked List Columns) 26
 Target Handle (Release List Columns) 28
 Target Open Mode (Locked List Columns) 26
 Target Open Mode (Release List Columns) 28
 Temporary Releases (Locked List Columns) 26
 Temporary Releases (Release List Columns) 28
 Terminate Application (Message Dialog) 14
 Terms and Trial Period 38
 Thread Count (Performance) 19
 Thread Timeout (Performance) 19
 Timeout (Performance) 19
 Toolbar (Menu) 3
 Toolbar: 6
 Options 6
 Save 6
 Start 6
 Stop 6
 Tray Icon (Menu) 3
 Trigger Event on Release of Files (Release Options) 18

- U -

Uninstall Service (Menu) 3
 Update (Selection List Popup Menu) 15
 Update Selection (Menu) 3
 Update Selection (Status Bar) 7
 Update Selection Dialog: 10
 Include Sub-Folders 10
 Source Selection 10
 Target Selection 10
 Update Source Modified Time (Release Options) 18
 Upgrade 1
 Use Skins (Menu) 3

- V -

View (Reporting) 25
 View Folder Selections 37
 View Log File (Menu) 3
 View Menu: 3
 Clear Log File 3
 Clear/View Folders 3
 Close All Folders 3
 Event Detection 3
 Event Detection Status 3
 Folders 3
 Lock List Status 3
 Log File 3
 Messages... 3
 Selection List 3
 Selection List Status 3
 Status Bars 3
 Toolbar 3
 Tray Icon 3
 Use Skins 3
 View Log File 3

- W -

Wait for Associated Application to Close (Release Options) 18